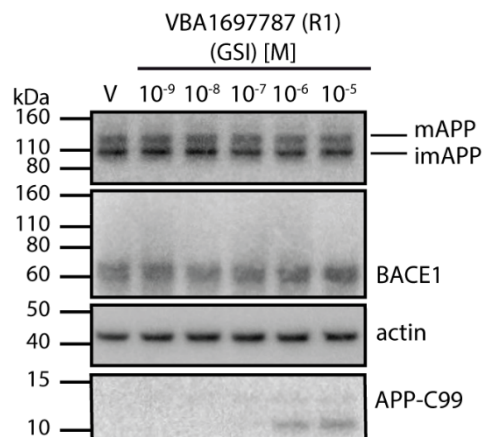
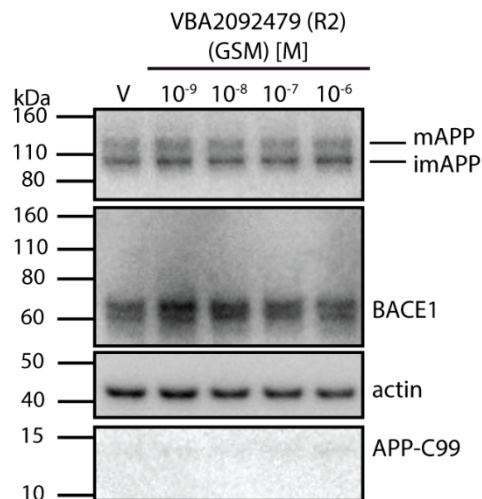


**a****b**

**Supporting Information 4. Effect of VBA1697787 (R1) GSI and VBA2092479 (R2) GSM on protein levels in stably APP-C99 overexpressing SH-SY5Y cells.** APP-C99-SH-SY5Y cells were treated with vehicle (V) or varying concentrations of the the VBA1697787 (GSI, R1) (a) and VBA2092479 (GSM, R2) (b).

**a – b.** Western blotting (representative of 3 independent experiments) of cell lysates for the detection of APP (*upper band*, mature; *lower band*, immature), BACE1, APP-C99 and actin (control).