

# Intelligent Data Analysis in HR Process Management

Mykola Ivanov <sup>1</sup>[0000-0002-1908-0763], Nataliia Maksyshko <sup>1</sup>[0000-0002-0473-7195],  
Sergey Ivanov <sup>1</sup>[0000-0003-1086-0701] and Nataliia Terentieva <sup>1</sup>[0000-0001-6930-879X]

<sup>1</sup>Zaporizhzhya National University, Zhukovsky str., 66, Zaporizhzhia, 69063, Ukraine  
mn\_iva@ukr.net, maxishko@ukr.net, flydaiver@gmail.com,  
terenteva\_nataliya@ukr.net

**Abstract.** This article discusses the problem of constructing a method of data mining in HR process management and modeling the assessment of the degree of personnel efficiency. A method of data mining in the management of HR processes in the form of an algorithm with a fuzzy inference procedure implemented in the MATLAB R2017a system is proposed, which made it possible to assess the degree of personnel work efficiency.

This method and procedures of data mining allows you to simulate multidimensional HR processes.

The application of the method and procedures of data mining in HR-process management allows us to develop problem solving approaches.

**Keywords:** intelligent data analysis, HR management systems, fuzzy sets, fuzzy inference procedure, fuzzy modeling, procedure

## 1 Introduction

Today, business is forced to solve a whole range of complex and unique tasks. So, to solve the problems of increasing and stabilizing the management of economic facilities in modern conditions, new approaches and solutions are required, which determined the emergence of a new concept of the German economist Klaus Schwab, President of the World Economic Forum in Davos [1]. According to this concept, it is stated that we live in the era of the fourth industrial revolution, where the virtual world is combined with the physical world using information technology. The fourth industrial revolution is characterized by a change in economic relations and the widespread use of intelligent technologies (Cloud technologies, Big Data, artificial neural networks and fuzzy sets, data mining and others), which is the basis of the digital economy.

It should be noted that there are various approaches to the determination and measurement of the dynamics of the digital economy, and it is also difficult to assess its volume. According to estimates [2], the share of the digital segment of the global economy in 2020 could be 23% (\$ 17 trillion). This leads to the expansion and rapid development of the Internet market using Big Data, followed by modeling by fuzzy logic approaches.

Copyright © 2020 for this paper by its authors. Use permitted under Creative Commons License Attribution 4.0 International (CC BY 4.0).

## **2 Formal problem statement**

Therefore for successful management of economic facilities in the digital economy an important role is given to HR management systems (Human resources) which are able to offer a radically new mechanism that allows companies to remain competitive in the market.

## **3 Literature review**

The first direction is determined by the level of application of intelligent systems. High information technologies embrace the world and replace the classical methods of HR-process management. Robot programs are now being applied, offering employees of the enterprise to undergo an express interview or interview using yet expert systems.

The next direction is the analysis and evaluation of young professionals who are able to learn and solve modern problems. Now, new specialists up to 25 years of age who have completely different knowledge, interests and fundamentally different ideas about modern work are entering the labor market. Young specialists are able to quickly make managerial decisions and push new projects forward, and thereby increase the level of work in the enterprise.

In addition to these areas, it should be noted that for a long time HR management was aimed at standardization and versatility. However, this approach is gradually becoming obsolete today. This approach is being replaced by HR management methods that are focused on the maximum use of the intellectual capital of employees. This is stimulated with the simultaneous satisfaction of individual needs, desires, employee capabilities and their synchronization with the tasks of the enterprise. Modern HR specialists are beginning to more closely monitor the development of employees within the enterprise, which allows flexible management of career growth, which can be adjusted taking into account the proposals of the employees themselves.

HR strategy is part of the overall strategy of enterprises and long-term planning of their business activities. An important role in these plans is played by assessments of the degree of personnel efficiency as a factor in updating and increasing production efficiency in the overall economic strategy of an enterprise. The creation of modern catalogs of employee data and their management requires the processing of a large amount of information. This is due to a wide range of organizational, economic and technical and technological tasks that are performed by personnel. Therefore, data analysis in the management of HR processes is an urgent task.

The influence of information technology in the management of economic systems was presented in the work of M. Ivanov [3]. However, the problems of rating management have not been resolved. The solution to the problem of rating management was the work of Yu. Lysenko, V. Petrenko L. [4]. However, the level of staff development and their assessment were not considered. This work was devoted to the solution of this problem, in which the theoretical aspects of personnel development are studied, in particular, the concept, main tasks and directions of personnel develop-

ment at the enterprise. V. Helman [5] considers the development of enterprise personnel as a change in its qualitative characteristics, in which indicators in the form of degree of activity were proposed.

Human resource management as a strategic human resource management today is seen as going beyond the boundaries of management tasks, such as motivation, the level of remuneration. Instead, managers need to consider HR management as a process that contributes to the success of the enterprise. Therefore, the work of Brian E. Becker [6] considers approaches where all managers should be involved in the management process, where the role of employees is important for the competitive advantage of the enterprise. In addition, organizations that value their skilled employees are more profitable than those that do not. The results of the works of scientists Mark A. Huselid [7], Jeffrey Pfeffer and John F. Veiga [8] show that successful enterprises have several common characteristics: stable job security, the use of self-government methods, perfect pay and access to information. These tasks were considered in the work of Brian E. Becker, Mark A. Huselid [9], when an enterprise develops and motivates the development of human capital. The most successful enterprises manage HR as a strategic asset, and evaluate the effectiveness of labor resources in terms of its impact. Dennis R. Briscoe [10] in his work write about situation when each employee of the enterprise effectively fulfills his duties and creates a high-performance work system in which the employee has the maximum involvement and responsibility.

In modern enterprises, an important task is to ensure a balance between the need for coordination and synchronization of units located both in different cities and around the world, which was reviewed by Randall S. Schuler, Pawan S. Budhwar, and Gary W. Florkowski [11]. Achieving this balance is becoming increasingly difficult as the level of functional diversity to which enterprises are exposed increases.

Today, new intelligent technologies are emerging to solve these problems. Such intelligent technologies include research and project management recommendations. Such works include the works of S. Gottwald [12] and N.Vedula, P. Nicholson [13].

These projects on improvement of resource processes are the ones of the most important tasks of production in enterprise management. Currently, the number of works in this direction is increasing by the authors W. Siler, J. Buckley [14], J. Waitelonis, C. Exeler, H. Sack [15] and A. Abraham [16]. The obvious advantage of the proposed methods is the use of mathematical tools, the theory of fuzzy sets, which allows implementing the process of selecting conditions, the introduction of the method in the managerial processes of the enterprise. It should be noted that this works did not solve the problem of data mining in HR-process management with the possibility of modeling the degree of personnel efficiency, which determined the topic and relevance of this article.

#### **4 The purpose of the article**

The article is devoted to development of a sequence of procedures for data mining in human resource management using fuzzy logic approaches.

## 5 Data Mining method in HR process management

The task of data mining in the management of HR processes is the effective extraction and analysis of the existing data array of employees with subsequent personnel management using cloud solutions. This will allow the rapid implementation of a new personnel management system, obtaining a new level of accessibility and increasing its mobility.

The resulting performance indicators of personnel at the enterprise can be represented in the form of multidimensional structures, where each measurement is represented by the corresponding indicators of the enterprise management system.

The following sequence diagram (the method) of data analysis in HR process management is proposed, which is presented in Fig. 1.

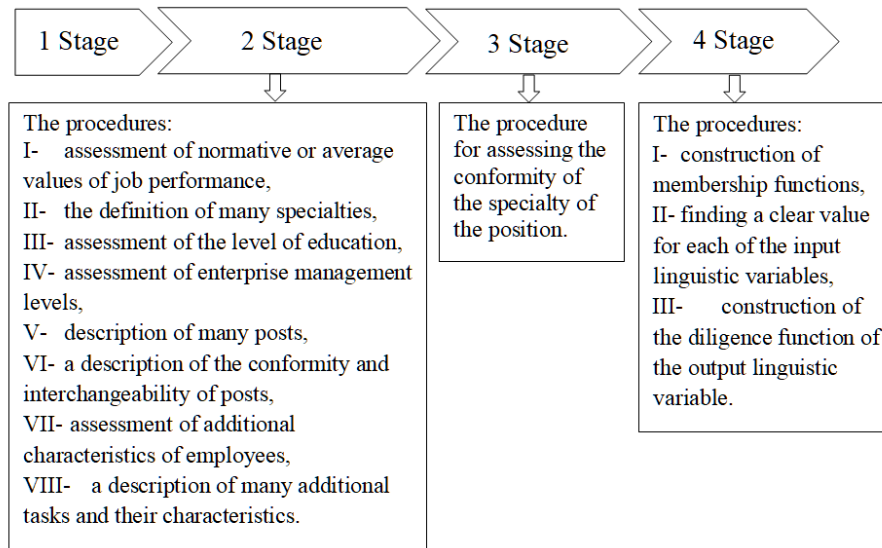


Fig. 1. Sequential data mining diagram in HR process management.

The proposed method includes four stages.

### 5.1 Stage 1 Procedures

The first stage solves the problem of choosing the analyzed indicators. For this, a lot of ratings are determined:

$$P = \{P_i = (op1, op2, ep1, ep2, ep3)\}, i = \overline{1, N}, \quad (1)$$

where  $op1$  is a generalized indicator of job compliance, characterizing the degree of conformity of qualifications and work experience of the post, level of responsibility, as well as the quality of the performance of current work and duties,

$op2$  - a generalized indicator of diligence, characterizing the effectiveness of the tasks (complexity, quality, timeliness),  
 $ep1$  - ambitiousness, a single indicator of personality characteristics,  
 $ep2$  - the quality of a leader, an indicator of personality characteristics,  
 $ep3$  - the level of attitude in the team, a single indicator of personality characteristics.

## 5.2 Stage 2 Procedures

At the second stage, the initial information is determined, which is necessary for calculating indicators based on expert assessments, analytical indicators (for example, work experience, quality of work performed, and others).

To describe the formalized set of sets of source information, we introduce the rules, namely, if the set  $P = \{P_i = (op1, op2, op3)\}$ , is defined, then to use the value of the component  $op02$  of unit level 0, we will use the notation  $op02$  (join operator).

At the second stage, procedures are applied that allow:

The first (I) procedure allows you to evaluate the regulatory or average value of the performance of official duties by employees –  $P$  :

$$P = \{P_i = (op01, op02, op03)\}, \quad (2)$$

where  $op01$  - normative or average value of the job performance of the  $i$ -th employee,

$op02$  - normative or average value of the level of assessment of the performance of tasks of the  $i$ -th employee.

The second (II) procedure is aimed at identifying many specialties (economist, programmer, builder and others) –  $SP$  :

$$SP = \{sp_r\}, \quad r = \overline{1, L^{SP}}, \quad (3)$$

where  $sp_r$  is the  $r$ -th specialty,

$L^{SP}$  - is the number of specialties.

The third procedure allows you to assess the level of education (secondary, bachelor, master and others) -  $UO$  :

$$UO = \{uo_\nu = (name, \mu)\}, \quad r = \overline{1, L^{OV}}, \quad (4)$$

where  $uo_\nu$  - is the vector of characteristics of the  $\nu$ -th category,

$name$  - category name,

$\mu$  - assessment of the level of education for the category in points,

$L^{OV}$  - is the number of categories.

The fourth (IV) procedure is aimed at assessing the level of enterprise management (higher, middle and lower level) -  $UD$  :

$$UD = \{ud_V = (name, \gamma)\}, \quad r = \overline{1, L^{UD}}, \quad (5)$$

where  $ud_V$  - is the vector of characteristics of the  $V$ -th level,

$name$  - level name,

$\gamma$  - is an estimate of the level in points,

$L^{UD}$  - the number of levels, which is determined by the scale of the enterprise.

The fifth (V) procedure solves the problem of describing many positions in the enterprise -  $D$  :

$$D = \{d_j = (name, ud, uo, kl, SPD) : ud \in UD, uo \in UO\}, \quad j = \overline{1, L^d}, \quad (6)$$

$$SPD = \{spd_r = (sp, \beta) : sp \in SP, 0 \leq \beta \leq 1\}, \quad r = \overline{1, L_j^{SPD}}, \quad (7)$$

where  $d_j$  is the  $j$ -th position,

$name$  - job title,

$ud$  - position level in the organizational and staff structure of the enterprise,

$uo$  - the level of education required for the  $j$ -th position,

$kl$  - required work experience (minimum number of years) in a given position for an optimal qualification level,

$SPD$  - many specialties related to this position,

$spd_r$  - is the vector of the correspondence characteristics of the  $r$ -th specialty of the  $j$ -th position  $\beta$ ,

$\beta$  - is the correspondence coefficient of the specialty  $sp$  of the  $j$ -th position,

$L^d$  - is the number of posts,

$L_j^{SPD}$  - number of specialties in the  $j$ -th position.

The sixth (VI) procedure solves the tasks of describing correspondence and job interchangeability -  $SD$  :

$$SD = \{sd_f = (d1, d2, \alpha) : d1 \in D, d2 \in D, 0 \leq \alpha \leq 1, (d1 = d2) \Rightarrow \alpha = 1\}, \quad f = \overline{1, L^{SD}}, \quad (8)$$

$$L^{SD} = (L^d)^2, \quad (9)$$

where  $sd_f$  - is the  $f$ -th vector of job matching characteristics  $d1$  and  $d2$ ,

$\alpha$  - is the compliance coefficient.

The seventh (VII) procedure is aimed at assessing additional characteristics of employees -  $A$ :

$$A = \{a_i = (ds, ST, OB) : ds \in D, uo \in UO\}, \quad i = \overline{1, N}, \quad (10)$$

$$ST = \{st_j = (d, kl) : d \in D, d \in UO\}, j = \overline{1, L_i^{ST}}, \quad (11)$$

$$OB = \{ob_w = (sp, uo, god) : sp \in SP, uo \in UO\}, w = \overline{1, L_i^{OB}}, \quad (12)$$

where  $a_i$  - is the vector of characteristics of the  $i$ -th employee,

$ds$  - the position held by the employee,

$ST$  - many posts in which the employee previously worked and experience in them,

$st_j$  - vector of characteristics of work experience in previous positions,

$kl$  - length of service (number of years) in the position  $d$ ,

$OB$  - value, reflects the education received by the  $i$ -th employee;  $sp$  - specialty;

$uo$  - level of education,

$god$  - year of receipt of the qualification document (certificate, certificate, diploma and others),

$L_i^{ST}$  - the number of posts previously held by the  $i$ -th employee,

$L_i^{OB}$  - the number of specialties in which the employee was educated by the  $i$ -th employee.

The eight (VIII) procedure allows you to describe many additional tasks (determined by orders) and their characteristics in the enterprise:

$$Z = \{z_k = (t0, tk, tk', usz), 0 \leq \beta \leq 1\}, k = \overline{1, M}, \quad (13)$$

where  $z_k$  - is the vector of characteristics of the  $k$ -th task,

$t0$  &  $tk$  - the value of the beginning and end of tasks, determines the term for completing the task in units of measurement of working time (for example, working days, hours and others),

$tk'$  - the value of time, determines the critical deadline for completing the task, after which the task is either canceled or transferred to another performer,

$usz$  - task difficulty level,

$M$  - is the number of tasks.

The set of completing additional  $IZ$  tasks by employees can be written as follows:

$$IZ = \{iz_k = (a, z, uv^p, uv) : a \in A, z \in Z, 0 \leq uv^p \leq 200\}, k = \overline{1, M}, \quad (14)$$

where  $iz_k$  - is the characteristic of the  $k$ -th job,

$a$  - an employee who performs additional tasks,

$iz$  - the task

$uv^p$  - is the percentage of the task according to the plan at the current time  $t$  ( $uv^p = 0$  at time  $t0$ ,  $uv^p = 200$  at time  $k$ ),

$uv$  - is the percentage of the task at the current time  $t$ .

In case of failure to perform additional tasks, the value of  $IZ = 0$ .

### 5.3 Stage 3 Procedures

At the third stage, the procedure for assessing the conformity of the specialty of the position is performed. The function  $f\beta$  returns the value of the correspondence of the specialty  $xsp$  to the position  $xd$  :

$$f\beta(xsp, xd) = \begin{cases} d_{j_0}.spd_{i_0}.\beta, \exists j_0 r_0 : (d_{j_0} = xd) \wedge (d_{j_0}.spd_{r_0}.sp) \\ 0, & \neg \exists j_0 r_0 : (d_{j_0} = xd) \wedge (d_{j_0}.spd_{r_0}.sp) \end{cases} \quad (15)$$

The function  $f\alpha$  returns the value of the coefficient of correspondence and interchangeability of the post  $xsp$  post  $xd$  :

$$f\alpha(xsp, xd) = \begin{cases} d_i.spd_g.\alpha, \exists g_0 : (sd_{g_0}.d1) \wedge (sd_{g_0}.d2 = xd) \\ 0, & \neg \exists g_0 : (sd_{g_0}.d1) \wedge (sd_{g_0}.d2 = xd) \end{cases} \quad (16)$$

To determine job conformity is the level of education of the position held in conjunction with work experience in similar or related positions:

$$p_i.op1 = \delta(op11.op12).op13, \quad (17)$$

$$op11 = \sum_{i=1}^{L_i^{ob}} f\beta(a_i.ob_w.sp.a_i.ds) \cdot \frac{a_i.ob_w.god}{godT}, \quad (18)$$

$$op12 = \sum_{i=1}^{L_i^{st}} f\delta(a_i.ds.f.a_i.st/d) \cdot \frac{a_i.st_{jkl}}{a_i.ds_{kl}}, \quad (19)$$

where  $godT$  - is the value of the current year,

$op11$  - qualification level of education received,

$op12$  - qualification level, which is determined by work experience,

$op13$  - quality of job performance, determined by an expert.

When solving the problem of data mining in the management of HR processes, fuzzy logic methods are used to display the result on the interval [0; 1].

### 5.4 Stage 4 Procedures

Therefore, at the fourth stage, the procedure for constructing membership functions based on the theory of fuzzy sets is performed.

The following “position”, “level”, “education” can be attributed to numerical linguistic variables of employees, and “conflict”, “level of substitution” to linguistic variables. Numerical linguistic variables and their meanings serve for a qualitative description of a quantitative quantity. The values of linguistic variables are determined by experts.



It should be noted that a linguistic variable, like its original term set, is associated with a specific dimensional scale on which all arithmetic operations are defined.

To assess the characteristics of employees in Table 1, linguistic variables and their dimensions are proposed.

**Table 1.** Linguistic variables of employee characteristics

Term set	The metric and type of exposure	$X_{\min}^1$	$X_{\max}^1$	The term designation
$T_1^1$	Performance of duties <position> - stimulation	0	1	Not performed Partially completed Performed
$T_2^1$	Job Interchangeability <Interchangeability Level>, discouragement	1	3,0	Low Average High
$T_3^1$	Level of education <education>, stimulation	1	3,0	Secondary education Bachelor Master
$T_4^1$	Conflict <conflict> ,stimulation	0	3,0	Low Average High
$T_5^1$	The importance level of the specialty < SpecialtyLevel >, discouragement	0	0,5	Low Average High

The use of the concept of stimulation and destimulation is applied taking into account the influence on the degree of personnel efficiency, namely, stimulation - the effect on the increase and destimulation - on the reduction of the factor.

Therefore, the term set  $T_i^n = \{T_i^{n'}\}$  is associated with the set  $T_i^{n'}$ , where  $T_i^{n'} = \langle x, \mu_{T_i^{n'}}(x) | x \in [x_{\min}, x_{\max}] \rangle$  - is a fuzzy number,  $i = \overline{1, m}$ ,  $m$  - is the number of term sets,  $n$  - is the number of employees.

To eliminate the influence of changes in the input variables of the metrics and, as a consequence, the correction of term sets, a transition to a normalized function is proposed. Let the previously defined term set  $T_i$  be the original one.

The normalized linguistic variable is a mapping on the interval [0; 1]:

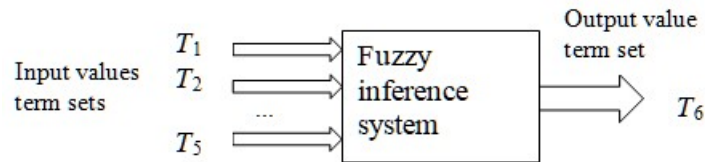
$$D_i^n = \{D_i^{n'}\}, D_i^{n'} = \langle z, \mu_{D_i^{n'}}(z) | z \in [0,1] \rangle, \quad (20)$$

where  $z$  is a fuzzy number corresponding to the term set  $D_i^j$  on the interval  $[0; 1]$ ,  $n$  - is the number of employees.

These functions allow you to display heterogeneous input variables in a single normalized interval  $[0;1]$ , which allows you to reduce errors associated with different quantities and their dimensions. This provides a convenient representation of the values, as well as their interpretation.

## 6 The method of constructing a model of data mining in HR process management

The structural model of data mining in HR process management is presented in Fig. 2.



**Fig. 2.** The structural model of the model of data mining in the management of HR-process.

In the structural model,  $T = \{T_i\}$  is a term set, where  $i = \overline{1, n}$ ,  $n$  - is the number of sets, each of which is represented by a fuzzy variable with a domain of definition  $x$ .

The process of modeling fuzzy values is based on a fuzzy inference system, which allows you to convert expert estimates into fuzzy values.

In the fuzzy inference system, the procedure for finding a clear value for each of the input linguistic variables based on defuzzification is applied. Defuzzification in a fuzzy inference system is the process of finding a value for each of the output linguistic variables of the set  $W = \{x_1, x_2, \dots, x_n\}$ . The task of defuzzification is to use the results of accumulation of all output linguistic variables. It is necessary to obtain a quantitative value of each of the output variables. Output variables can be used in a fuzzy inference system relative to the input linguistic variable.

Accumulation of fuzzy inference is the process of finding the membership function for each of the output linguistic variables of the set.

The transformation of a fuzzy set into list of values of variables is named as defuzzification.

The defuzzification procedure is performed by a sequence that considers each of the output linguistic variables  $\beta$  and the fuzzy set  $T_i = \{T_i^j\}$  related to it. The result of defuzzification for the output linguistic variable is defined as a quantitative value.

The defuzzification process is considered complete when quantitative values are determined for each of the output linguistic variables. For the fuzzy inference system, the Mamdani algorithm was applied [17].

The Mamdani algorithm includes the following steps [18, 19]:

the formation of a rule base for fuzzy inference systems;  
 fuzzification of input variables;  
 aggregation of conditions in fuzzy rules to find the degree of truth of the conditions of each of the rules of fuzzy logic;  
 accumulation of conclusions of fuzzy production rules;  
 defuzzification of output variables based on the center of gravity method.  
 An example of one of 234 rules has the following form:

If (Position is Npfd) and (InterchangeabilityLevel is low) and (Education is secondary) and (Conflict is low) and (SpecialtyLevel is low) then (StaffEfficiency is NotHardworking).

Depending on the nature of the domain X, numerical linguistic variables can be defined.

The values of linguistic variables are determined on an ordinal scale. It should be noted that a linguistic variable, like its original term set, is associated with a specific scale on which all arithmetic operations are defined. Therefore, the term set  $T_i = \{T_i^j\}$  is associated with the set  $T_i^j$ , where  $T_i^j = \langle x, \mu_{T_i^j}(x) \mid x \in [x_{\min}, x_{\max}] \rangle$ ;  $i = \overline{1, n}$ ;  $j = \overline{1, m}$ ;  $n$  - is the number of term sets,  $m$  is the number of terms.

A model that satisfies these fuzzy sets is their union:

$$\mu_{T_i} = \sup \{ \mu_{T_i^j}(x) \}, \quad T_i = \cup T_i^j. \quad (21)$$

We construct membership functions for the linguistic variable characteristics of employees, presented in Table 1.

The process of converting experts' qualitative assessments into fuzzy quantities consists in mapping the elements of the original term set in the form of constructing membership functions of fuzzy quantities  $T_i^j \in T_i$ .

The description of linguistic variables is as follows:

⟨position, {not fulfilled, partially fulfilled, fulfilled}, [0; 1]⟩,

⟨level of interchangeability, {low, medium, high}, [1; 3]⟩,

⟨education, {secondary, bachelor, master}, [1; 3]⟩,

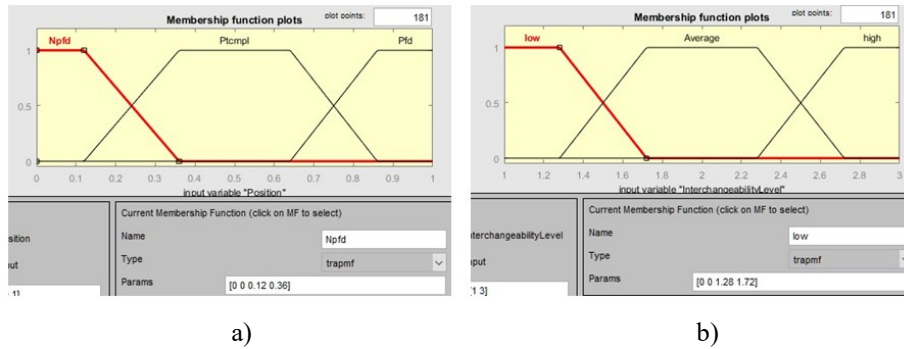
⟨conflict, {low, medium, high}, [1; 3]⟩.

Moreover, the values of the sets are in the range [0; 1] & [1; 3].

## 7 Experiments and results

The use of trapezoidal membership functions is due to the fact that the calculation uses the definition of fuzzy numbers. This form of analytical approximation use (LR) - functions, which include the trapezoid functions. From this it follows that fuzzy numbers are determined to perform operations with similar procedures.

The constructed membership functions of the input linguistic variables are presented in Fig. 3.

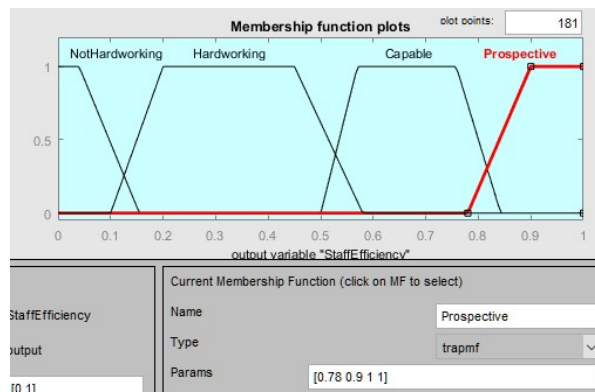


**Fig. 3.** The membership function of the input linguistic variables: a) “Fulfillment of duties”, b) “Interchangeability of posts”.

To assess the degree of personnel efficiency, developed knowledge bases are applied, which are presented in the form of a rule base.

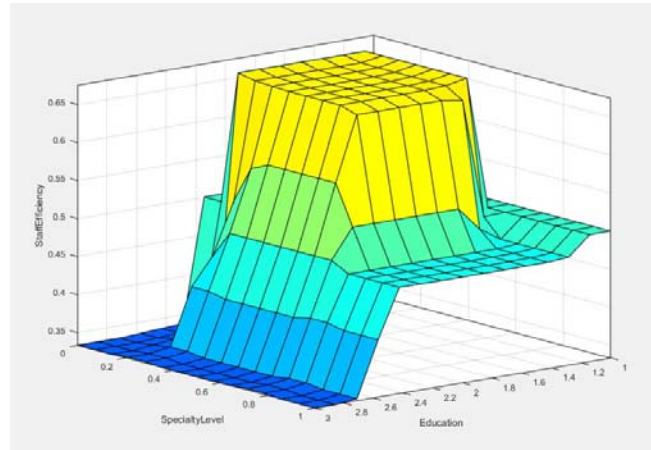
In the fuzzy inference procedure for managing HR processes, it is necessary to consider the work of employees at all levels of work. The fuzzy inference procedure is implemented in the MATLAB R2017a system, which allowed obtaining the following results of assessing the degree of personnel efficiency.

To perform the procedure, we built the diligence function of the output linguistic variable “assessment of the degree of personnel efficiency”, which is presented in Fig. 4.

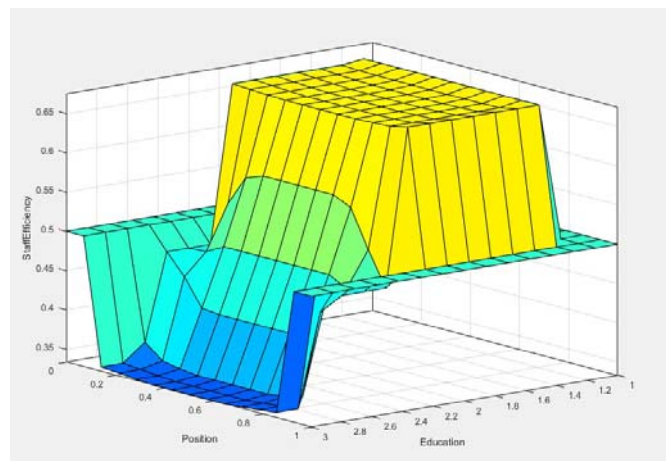


**Fig. 4.** The membership function of the output linguistic variable "assessment of the degree of personnel efficiency".

The simulation results of assessing the degree of personnel efficiency, which is presented in Fig. 5.



a)



b)

**Fig. 5.** Modeling the assessment of the degree of personnel efficiency: a) level of importance of the specialty(SpecialtyLevel) and education, b) performance of duties (Position) and education.

The results of modeling the potential effectiveness of the staff showed that five sets: responsibilities, job experience, duration of continuous work per day, job interchangeability, conflict, the level of importance of the specialty and the level of education have an intersection ( $\bigcap_{i=1}^5 T_i^1 \neq \emptyset$ ). The value of the potential efficiency of the employee's staff is equal to the intersection of sets and it is 0.65, which corresponds to a high score (Fig. 5).

The result can be used by business entities to improve the efficiency of staff and in the selection of personnel.

## 8 Conclusion

The authors of the article propose a solution for constructing a sequence of data mining of human resources and modeling the degree of personnel efficiency based on fuzzy sets.

The proposed data analysis method involves four steps. At the first stage, the problem of choosing the analyzed indicators is solved. At the second stage, eight procedures are performed to solve the following problems: to assess the normative or average values of labor productivity, to determine many specialties, to assess the level of education, to evaluate the levels of enterprise management, to describe a lot of posts, to describe correspondence and job interchangeability, to evaluate additional characteristics of employees, for descriptions of many additional tasks and their characteristics. At the third stage, the procedure for assessing the conformity of the specialty of the post is carried out. At the fourth stage, the procedure for constructing membership functions based on the theory of fuzzy sets is performed. The fuzzy inference procedure is implemented in the MATLAB R2017a system, which makes it possible to assess the degree of personnel efficiency.

Prospects for the application of the proposed method and procedures for data mining of human resources lie in the possibility of using large data warehouses and cloud computing.

## References

1. Schwab, K.I.: *The Fourth Industrial Revolution*. Currency, Geneva (2016).
2. Ryan, J.: Engaging Professional Audiences on LinkedIn, <https://www.emarketer.com/topics/topic/b2b>.
3. Ivanov, M.: Cloud-based Digital Marketing. *CEUR Workshop Proceedings*. Vol. 2422, pp. 395-404 (2019).
4. Lysenko, Yu.G., Petrenko, V.L., Bogatov, O.I., Skobelev, V.G.: Rating management of economic systems. *Yugo-Vostok, Donetsk* (1999).
5. Helman, V.M., Makazan, Ye.V., Buriak, A.M.: Personnel development as pledge of the success of enterprise. *Bulletin Zaporizhzhia national university. Economic sciences*. Vol. 43(3), pp. 112 - 115 (2019). doi: 10.26661/2414-0287-2019-3-43-18
6. Becker, Br. E., Huselid, M. A.: Strategic Human Resources Management: Where Do We Go from Here?. *Journal of Management*. Vol. 32(6), pp. 898–925 (2006). doi: 10.1177/0149206306293668
7. Huselid, M. A.: The Impact of Human Resource Management Practices on Turnover, Productivity, and Corporate Financial Performance. *Academy of Management Journal*. Vol. 38(3), pp. 635–672 (1995). Available at SSRN: <https://ssrn.com/abstract=1803666>
8. Pfeffer, J., Veiga, J. F.: Putting People First for Organizational Success. *Academy of Management Executive*. Vol. 13(2), pp. 37–48 (1999). doi: 10.5465/ame.1999.1899547
9. Becker, Br. E., Huselid, M. A., Ulrich, D.: Six Key Principles for Measuring Human Capital Performance in Your Organization. Working paper, School of Management and Labor Relations (2002).
10. Briscoe, D. R., Schuler, R. S., Claus, L.: *International Human Resource Management*, 3rd ed.. Chartered Institute of Personnel and Development, New York (2009)

11. Schuler, R. S., Budhwar, P. S., Florkowski, G. W.: International human resource management: review and critique. *International Journal of Management Reviews*. Vol. 4(1), pp. 356–414 (2002). doi: 10.1111/1468-2370.00076
12. Gottwald S.: Universes of Fuzzy Sets and Axiomatizations of Fuzzy Set Theory. Part I: Model-Based and Axiomatic Approaches. *Studia Logica*. Vol. 82(2), pp. 211–244. Springer (2006). doi: 10.1007/s11225-006-7197-8
13. Vedula, N., Nicholson, P.K., Ajwani, D., Dutta, S., Sala, A., Parthasarathy, S.: Enriching taxonomies with functional domain knowledge. *SIGIR '18*, pp. 745–754 (2018). doi: 10.1145/3209978.3210000
14. Siler, W., Buckley, J.: *Fuzzy Expert Systems and Fuzzy Reasoning*. Wiley Interscience, Birmingham (2005).
15. Waitelonis, J., Exeler, C., Sack, H.: Linked data enabled generalized vector space model to improve document retrieval. *International Semantic Web Conference (ISWC)*. Vol. 1581(4), (2015).
16. Abraham, A.: *Intelligent Systems: Architectures and Perspectives, Recent Advances in Intelligent Paradigms and Applications*. Springer, Verlag (2003).
17. Mamdani, E.H., Assilian, S.: An experiment in linguistic synthesis with a fuzzy logic controller. *Int. J. Man-Mach*. Vol. 7, pp. 1–13 (1975).
18. Gacto, M., Alcalá, R., Herrera, F.: Interpretability of linguistic fuzzy rule - based systems: An overview of interpretability measures. *Information Sciences*. Vol. 181(20), pp. 4340–4360 (2011).
19. Gang F.: *Analysis and synthesis of fuzzy control systems: a model-based approach*. CRC Press (2010).