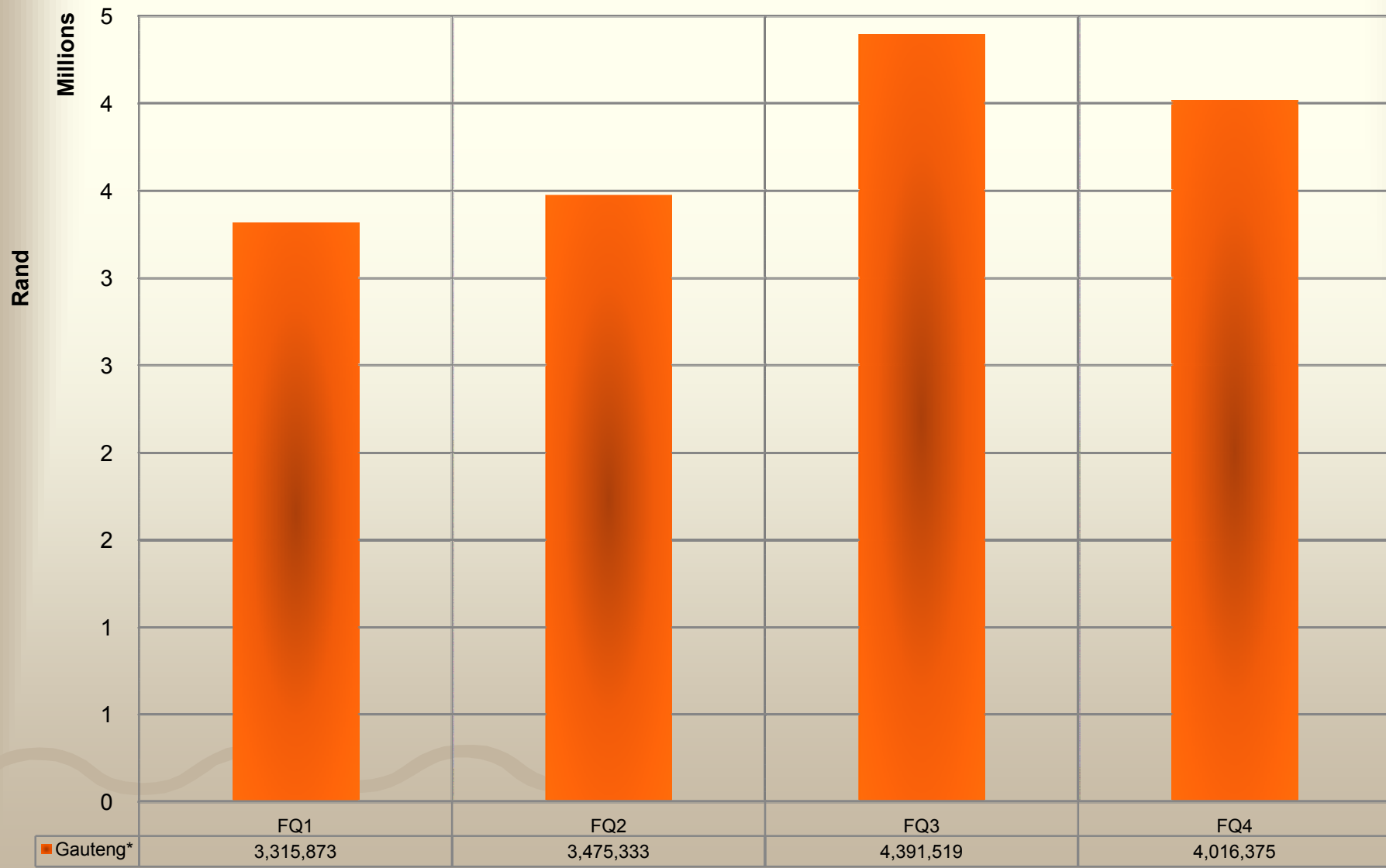


Quarterly bingo tax/levies - F2009

[Gambling tax levied by and collected by PLAs]

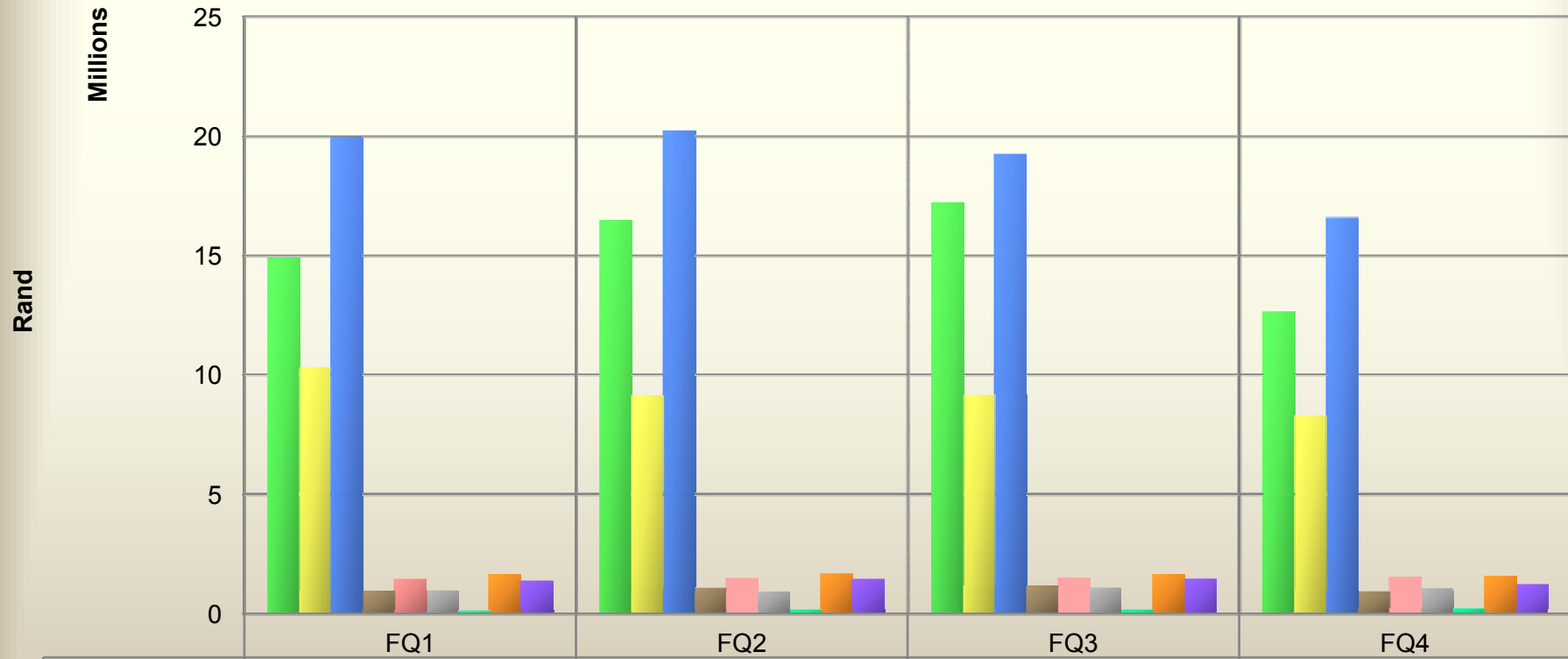


* Bingo offered for play only in Gauteng

Quarterly betting tax/levies – F2009

[Bookmakers & Totalisators]

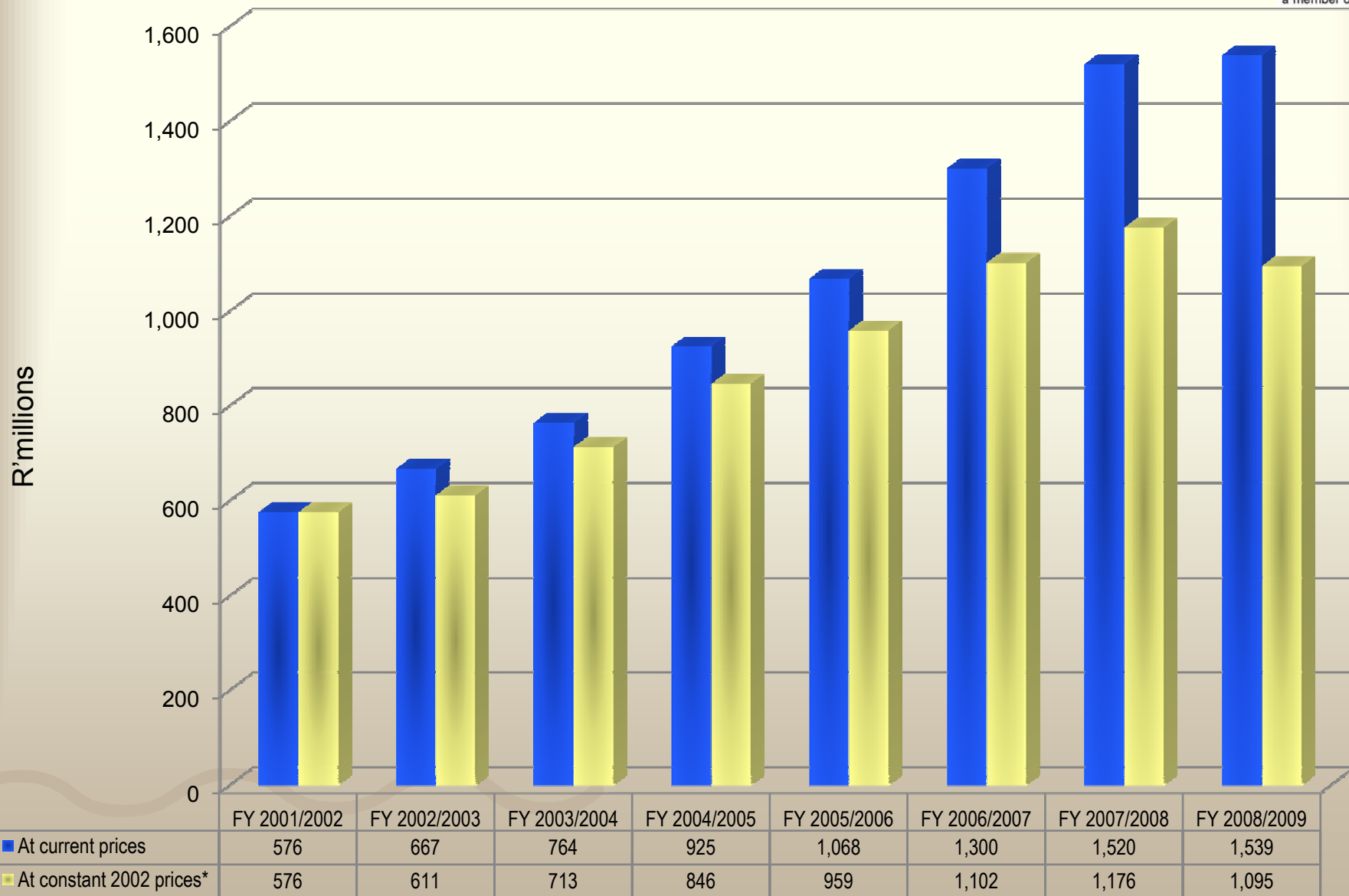
[Gambling tax levied by and collected by PLAs]



| | FQ1 | FQ2 | FQ3 | FQ4 |
|-----------------|------------|------------|------------|------------|
| ■ Gauteng | 14,904,389 | 16,497,825 | 17,248,116 | 12,617,040 |
| ■ Western Cape | 10,317,382 | 9,118,962 | 9,134,654 | 8,282,095 |
| ■ KwaZulu-Natal | 19,956,048 | 20,228,635 | 19,242,335 | 16,582,249 |
| ■ Mpumalanga | 953,989 | 1,088,245 | 1,142,473 | 931,735 |
| ■ Limpopo | 1,447,057 | 1,480,580 | 1,492,680 | 1,529,928 |
| ■ North West | 957,847 | 918,942 | 1,094,299 | 1,043,399 |
| ■ Northern Cape | 97,135 | 134,010 | 134,386 | 207,939 |
| ■ Eastern Cape | 1,625,446 | 1,685,247 | 1,654,266 | 1,560,004 |
| ■ Free State | 1,387,832 | 1,453,581 | 1,457,343 | 1,226,248 |

Trend in Taxes/Levies – F01/02 to F08/09

Taxes/Levies - All Modes



* Source: Taxes/Levies are deflated with the 2008 rebased Consumer Price Indexes of Stats SA