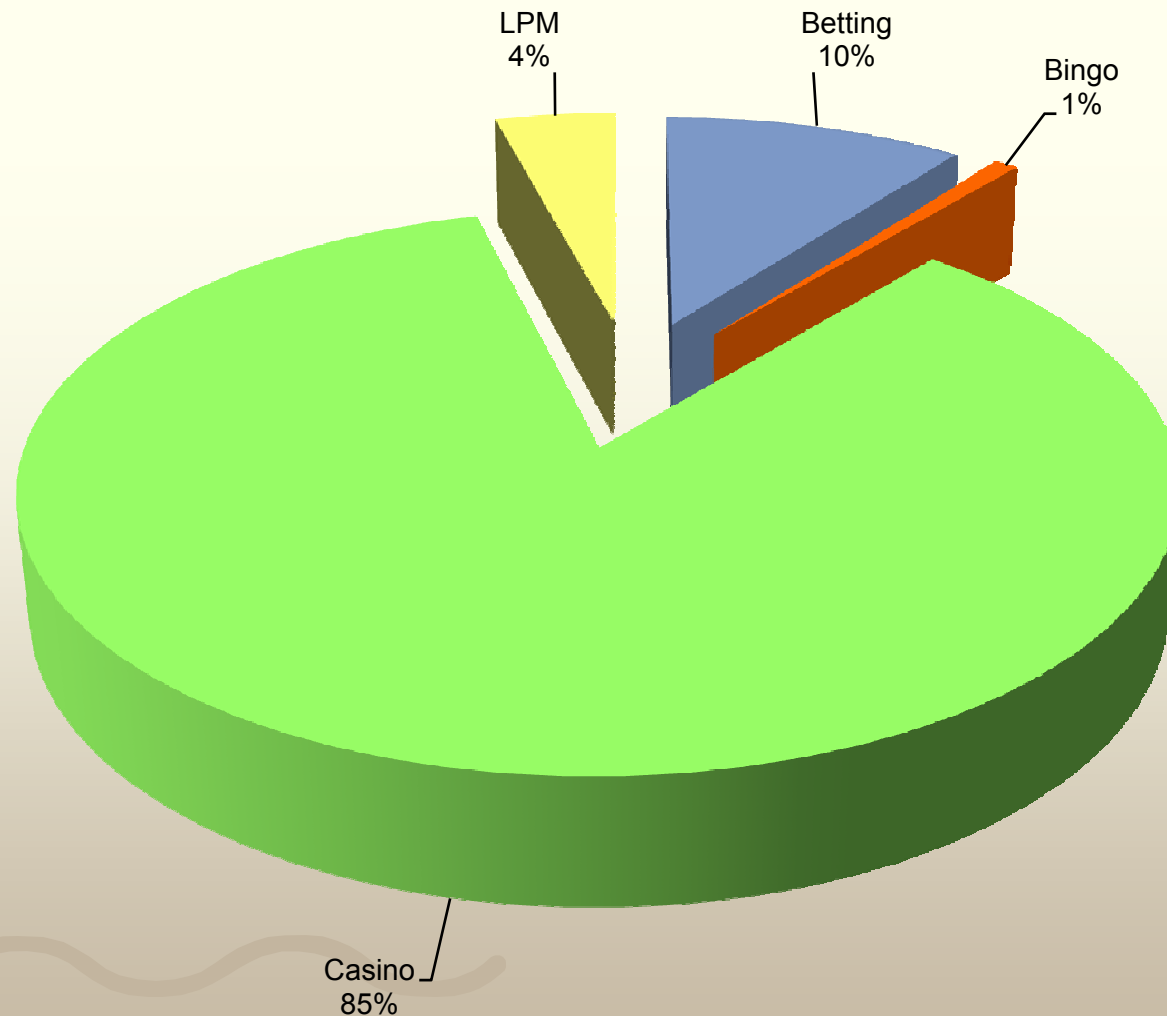


# GGR per gambling mode - F2009\*

[Rand value of the gross revenue of an operator]



**Total: R15,921 billion**

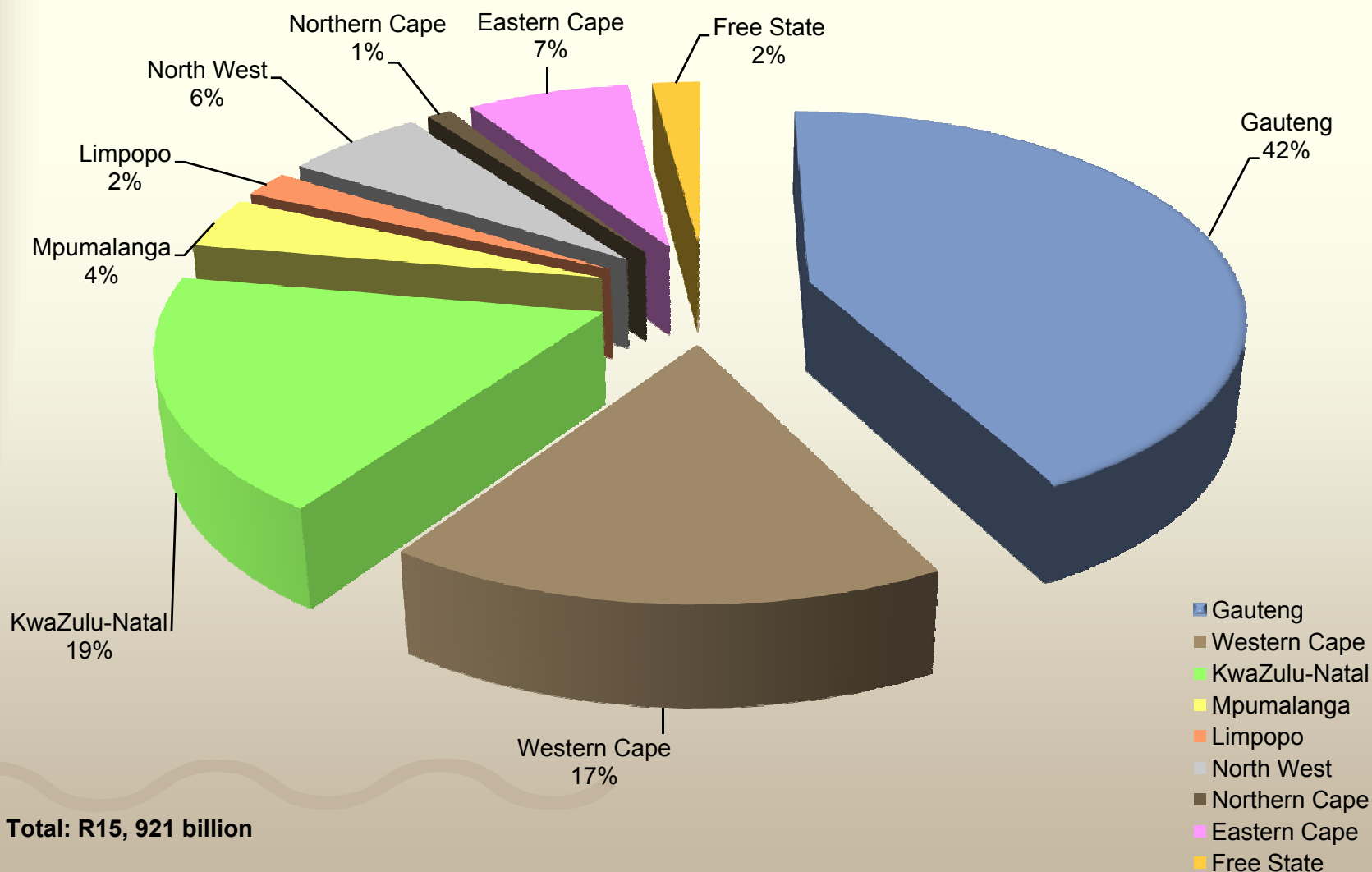
■ Betting ■ Bingo ■ Casino ■ LPM

\* Based on audited annual figures

\* Northern Cape data is based on quarterly figures

# GGR per province - F2009\*

[Rand value of the gross revenue of an operator]



\* Based on audited annual figures

\* Northern Cape data is based on quarterly figures

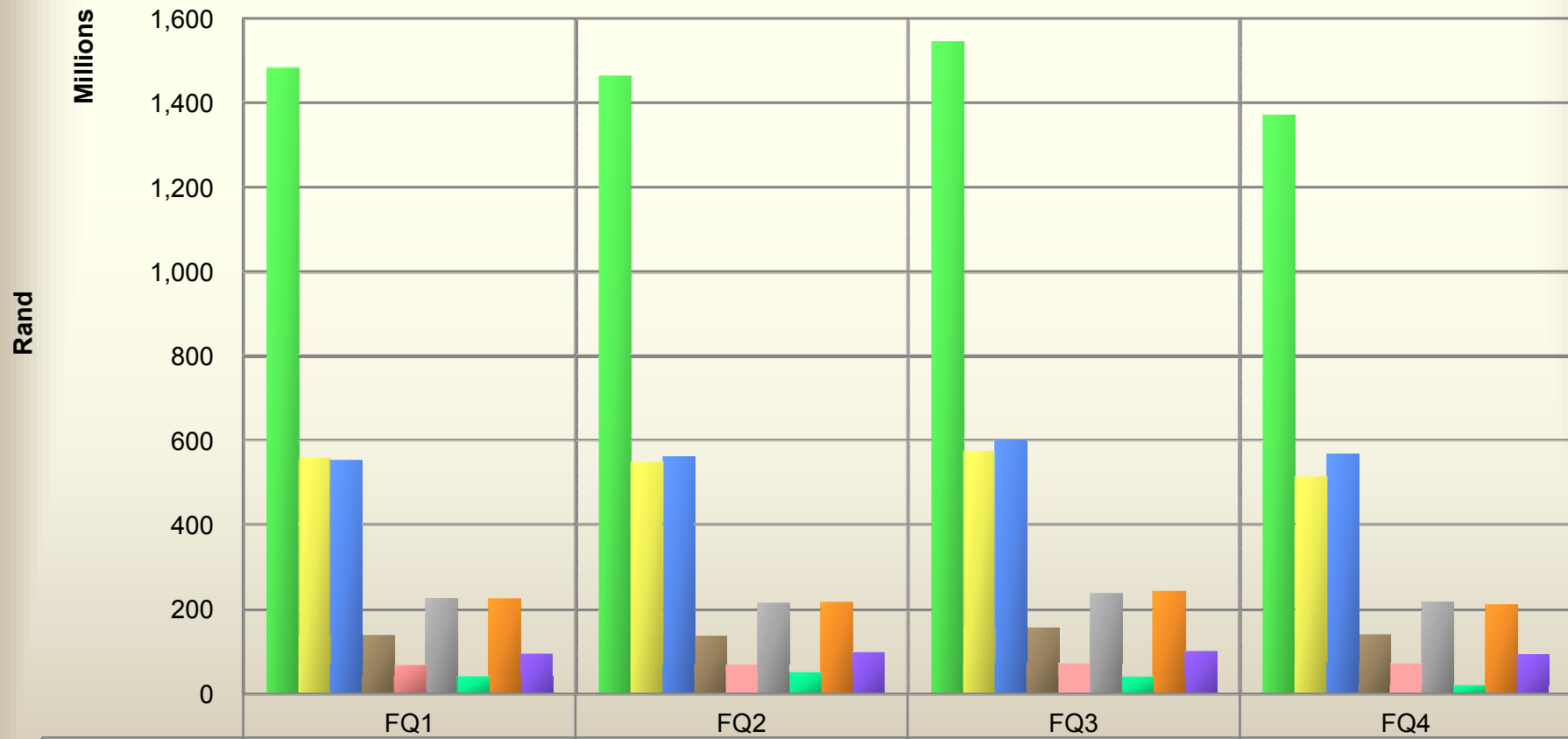
# Quarterly casino GGR - F2009

[Rand value of the gross revenue of an operator]



**National  
Gambling Board**

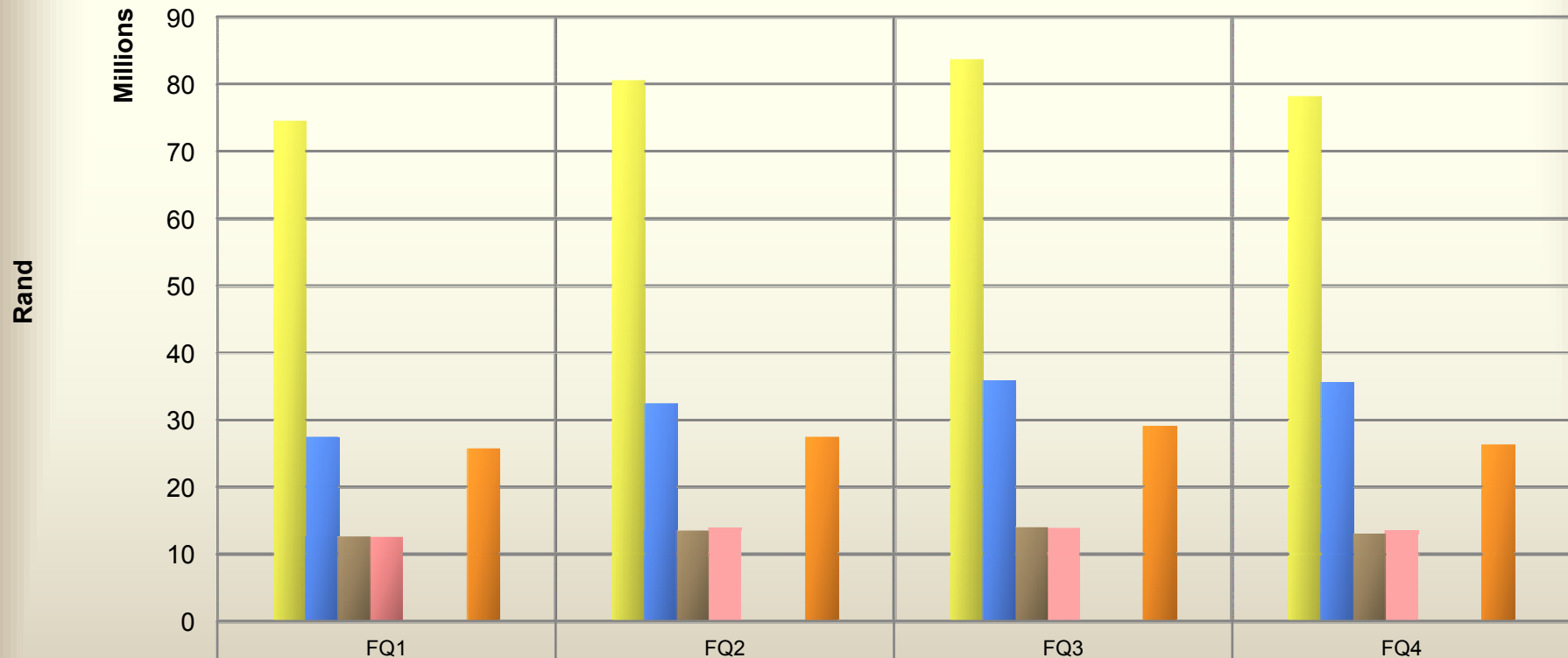
a member of the dti group



	FQ1	FQ2	FQ3	FQ4
■ Gauteng	1,482,915,684	1,463,456,338	1,544,875,496	1,370,540,033
■ Western Cape	557,775,817	547,658,421	572,879,213	511,976,718
■ KwaZulu-Natal	552,031,385	561,626,589	601,276,547	568,454,507
■ Mpumalanga	138,816,664	137,478,134	156,027,199	140,198,620
■ Limpopo	65,874,077	67,913,385	70,813,960	70,631,414
■ North West	224,973,308	214,876,820	238,327,689	218,801,974
■ Northern Cape	40,140,260	48,825,796	39,682,543	20,535,813
■ Eastern Cape	223,986,359	216,749,635	242,844,661	211,536,188
■ Free State	94,764,518	97,785,561	99,972,707	93,181,244

# Quarterly LPM GGR - F2009

[Rand value of the gross revenue of an operator]



	FQ1	FQ2	FQ3	FQ4
■ Gauteng*				
■ Western Cape	74,537,786	80,477,653	83,676,437	78,186,896
■ KwaZulu-Natal	27,364,011	32,410,838	35,787,207	35,538,556
■ Mpumalanga	12,602,682	13,596,458	14,020,226	13,072,027
■ Limpopo	12,536,454	13,882,556	13,803,154	13,644,767
■ North West*				
■ Northern Cape*				
■ Eastern Cape	25,637,193	27,390,837	29,093,914	26,279,432
■ Free State*				

\* LPMs not yet rolled out