

IC 310, IC 310 PLUS

The high-performance dry ice blasting machine is designed for the most difficult cleaning tasks.



Standard dry ice pellets
1.5 mm / 3 mm



Superior performance & power



Simple operation



Easy maintenance



**Compact size
Mobile version**



PLASTIC NOZZLE

FOLDING HANDLE

ERGONOMIC BLAST GUN WITH A SAFETY SWITCH AND LED LIGHT

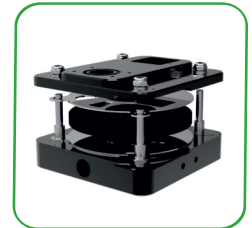
ANTI-VANDAL BUTTONS

DIGITAL CONSUMPTION INDICATOR

7 m BLAST HOSE 3/4" WITH ANTI - KINK SPRING HOSE GUARD

INSULATED HOPPER

STAINLESS STEEL HOUSING



PATENTED FEEDING SYSTEM



PRESSURE CONTROL, DRY ICE CONSUMPTION CONTROL



ANTI - CLOGGING SYSTEM



STAINLESS STEEL QUICK CONNECT



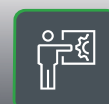
Development



Manufacturing



Maintenance and Repair



Training

Characteristics

The IC310 professional dry ice blasting machine is intended primarily for the removal of thick and stubborn dirt by using of 3 mm dry ice pellets. The patented feeding system works reliably without any pressure losses, thus allowing you to make the best use of its performance capabilities.

ICS 310, as well as other ICS machines, has an integrated anti-clogging system in the hopper throat as a standard. The sophisticated pipe and hose system design eliminates the breaking of pellets by the jet of air and the blasting nozzles are ingeniously shaped to increase the velocity of the pellets before hitting cleaned surface.

The stainless steel frame and the housing of the machine guarantee a long service life. The machine requires minimum maintenance costs even in the most difficult operating conditions.

IC 310 will impress you with its powerful performance even in challenging professional cleaning applications.

Technical specifications

- | | | |
|--|---|---|
| <ul style="list-style-type: none">■ Dimensions
Length: 565mm
Width: 387 mm
Height: 795 mm (1007 mm with a handle) | <ul style="list-style-type: none">■ Consumption
Dry ice: max. 100 kg/h
Compressed air: 1.0 - 12.0 m³/min.
(35,3-424 CFM) depending on the nozzle type | <ul style="list-style-type: none">■ Weight
Empty machine:
70 kg (without the hose) |
| <ul style="list-style-type: none">■ Operating pressure
1-16 bar / 14,5 - 232 PSI | <ul style="list-style-type: none">■ Hopper capacity
13 kg | <ul style="list-style-type: none">■ Material
Casing: stainless steel |
| <ul style="list-style-type: none">■ Service supply connections:
Compressed air : DIN 3489 claw coupling
Electrical : 200W, 110-240 V , 50-60 Hz | <ul style="list-style-type: none">■ Noise Level
60 – 120 dB (A) depending on the blasting pressure, nozzle type | |

IC 310



IC 310 PLUS



Standard package contents

- **Blast hose**
7 m 3/4"
- **Ergonomic Blast gun**
With safety switch
- **Plastic nozzle RN-10-08**
round nozzle suitable for a wide range of uses

PLUS Accesories

- **Flex case II, PLUS**
Set of extra nozzles & extensions
- **LED light for gun**
IG-10-02-000
- **Compressed air hose**
10 m 3/4"
- **Ice shovel**
2 kg Capacity



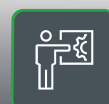
Development



Manufacturing



Maintenance
and Repair



Training