

General: Orma Ceiling is a compact and shallow family of outdoor LED down lights perfect for under canopies, part of the broader Orma family of in-grade and wall fixtures. The overall height of roughly 3" including the necessary cable clearance makes it one of the most compact fixtures on the market. Multiple beam spreads, color temperatures and the choice to use Constant Current or Constant Voltage make it a flexible solution for any outdoor project.

Fixture Body: Die-Cast Aluminum 6060, anodized black (15 µm)
Trim: Semi-Flush (Stainless Steel or Brass) Trim. Brass is untreated and will patina naturally. Extra-clear, Tempered glass.
Mounting: Springs. Suitable for ceilings from 0.197" to 0.787" thick. Custom solutions available upon request.
Dimensions/Weight: 2.5" (0.44 lbs) – 3.8" (1.1 lbs) – 5.4" (1.98 lbs)

Driver: Remote, 120-277V Dimmable 0-10V or Non-Dim. Available in both Constant Current (CC) and Constant Voltage (CV) to leave flexibility of installation.
CC features: Less susceptible to voltage drop (exceeding 32' distance); Allows for dimming down to 0.1%; Fixtures need to be wired in series.
CV features: Possibility to use higher wattage drivers and feed multiple fixtures with less drivers; fixtures need to be wired in parallel.

Wattages CC/CV: 4W/5W (2.5") – 8W/9W (3.8") – 12W (5.4" - CC Only)
Cable: Fixture comes with 3.28' of power cable and built-in Aquastop® (anti-wicking) system

IP rating: IP67
IK rating: IK 10
ETL Certification: ETL, wet location

Optics: Fixed or Adjustable (optic adjustability from side of fixture, which avoids having to open the trim). Available in Spot – Flood – Wide Flood – Elliptical. Some variants can also mount Honeycomb and Anti-glare (Dark Light) accessories.

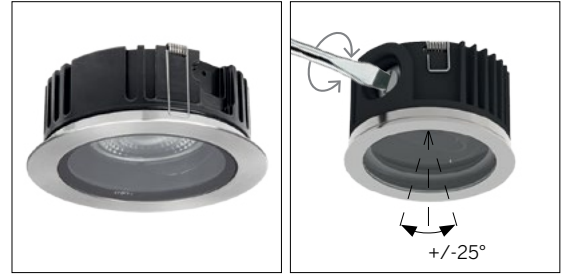
Color temperatures: 2700K – 3000K – 4000K.
CRI: 80+

Lumen Maintenance: L70 projections tested at Tj 65° C and Ta 25°.
Warranty: 5-year Limited Warranty on fixtures. 1-year Limited Warranty on Remote Drivers.



2.5" 4W CC / 5W CV

3.8" 8W CC / 9W CV



5.4" 12W CC

adjustable

Fixed Delivered Lumens*	2.5" [4 CC]	3.8" [8 CC]	3.8" [8 CV]	5.4" [12 CC]
SP	307	852	953	1455
FL	271	895	997	1380
WFL	299	811	903	1385
EL	335	-	-	-

Fixed HoneyComb Delivered Lumens*	2.5" [4 CC]	3.8" [8 CC]	3.8" [8 CV]	5.4" [12 CC]
SP	224	612	679	1156
FL	187	646	717	982
WFL	180	608	675	842

Fixed DarkLight Delivered Lumens*	2.5" [4 CC]	3.8" [8 CC]	3.8" [8 CV]	5.4" [12 CC]
SP	217	556	617	1178
FL	194	600	667	1095
WFL	230	539	599	925

Adjustable Delivered Lumens*	2.5" [4 CC]	3.8" [8 CC]	3.8" [8 CV]	5.4" [12 CC]
SP	307	852	953	1245
FL	271	895	997	1318
WFL	299	811	903	1295

Adjustable HoneyComb Delivered Lumens*	2.5" [4 CC]	3.8" [8 CC]	3.8" [8 CV]	5.4" [12 CC]
SP	612	679	871	1455
FL	646	717	936	1380
WFL	608	675	781	1385

*Values shown for 3000K

Ordering Information

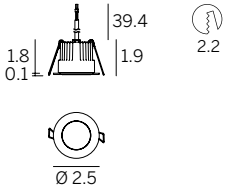
Product	Trim	Type	Diameter	Wattage/Operation	Color Temp	Optic	+	Driver (Required) ³
ORC = Orma Ceiling	SFST = Semi-Flush St. Steel Trim SFBT = Semi-Flush Brass Trim	F = Fixed	25 = 2.5"	4 CC = 4W / Constant Current (350mA) 5 CV = 5W / Constant Voltage	27 = 2700K 30 = 3000K 40 = 4000K	SP = Spot FL = Flood WFL = Wide Flood EL = Elliptical ²	+	CC: ECO30W-XXX SOLO50W-XXX SOLO100W-XXX CV: OT96-D010 OT96-JBX
		FHC = Fixed HoneyComb	38 = 3.8"	8 CC = 8W / Constant Current (220mA) 9 CV = 9W / Constant Voltage				
		FDL = Fixed DarkLight A = Adjustable AHC = Adjustable HoneyComb ¹	54 = 5.4"	12 CC = 12W / Constant Current (350mA)				

¹ Not available with 2.5"

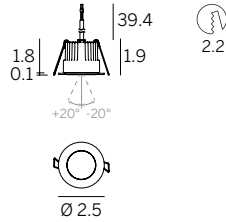
² 2.5" Fixed ONLY

³ See page 2

2.5" 4W CC / 5W CV



fixed



adjustable

DRIVER OPTIONS (pick one)

C.C. Power supply options (remote only)

ECO30W-350

0-10V EidoLED
ECOdrive 30W
for 1-3 fixtures

SOLO50W-350

0-10V EidoLED
SOLOdrive 50W
for 1-6 fixtures

SOLO100W-350

0-10V EidoLED
SOLOdrive 100W
for 1-12 fixtures

C.V. Power supply options (remote only)

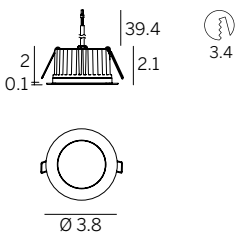
OT96-D010

Osram, 10% 0-10V dim, 96W,
24VDC, 120-277VAC, supplied
in a Dry location enclosure

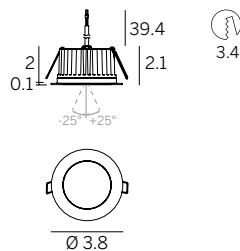
OT96-JBX

Osram, Non-dim 24VDC,
120-277VAC, Wet location

3.8" 8W CC / 9W CV



fixed



adjustable

DRIVER OPTIONS (pick one)

C.C. Power supply options (remote only)

ECO30W-220

0-10V EidoLED
ECOdrive 30W
for 1 fixture

SOLO50W-220

0-10V EidoLED
SOLOdrive 50W
for 1-2 fixtures

SOLO100W-220

0-10V EidoLED
SOLOdrive 100W
for 1-4 fixtures

C.V. Power supply options (remote only)

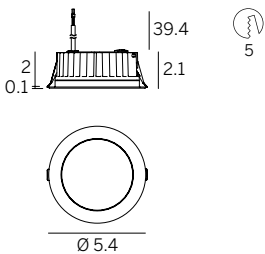
OT96-D010

Osram, 10% 0-10V dim, 96W,
24VDC, 120-277VAC, supplied
in a Dry location enclosure

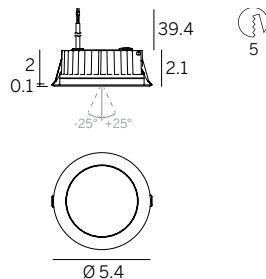
OT96-JBX

Osram, Non-dim 24VDC,
120-277VAC, Wet location

5.4" 12W CC



fixed



adjustable

DRIVER OPTIONS (pick one)

C.C. Power supply options (remote only)

ECO30W-350

0-10V EidoLED
ECOdrive 30W
for 1 fixture

SOLO50W-350

0-10V EidoLED
SOLOdrive 50W
for 1-2 fixtures

SOLO100W-350

0-10V EidoLED
SOLOdrive 100W
for 1-4 fixtures

C.V. Power supply options (remote only)

OT96-D010

Osram, 10% 0-10V dim, 96W,
24VDC, 120-277VAC, supplied
in a Dry location enclosure

OT96-JBX

Osram, Non-dim 24VDC,
120-277VAC, Wet location