



**Indiana Gaming Commission**  
**Sara Gonso Tait**  
**Executive Director**



**2020**  
**Annual Report to**  
**Governor Eric Holcomb**

# CONTENTS

Current Commission Members	2-3
Executive Director's Report	5-8
FY 2020 Tax Overview	10
FYS 2019-2020 Tax Comparison	11-12
Revenues and Expenditures	13
MBE/WBE Utilization	14
Organizational Chart	15-16
<b><u>Divisions</u></b>	
Division Statistics	18-21
<b><u>Indiana Casinos</u></b>	
Casino Map	23
Property Summaries	24-36
<b><u>Appendix</u></b>	38-49

# THE INDIANA GAMING COMMISSION

## Michael McMains (Chairman)



**Michael McMains**, of Indianapolis, is a health and business lawyer and is a graduate of the Purdue University College of Pharmacy and the Indiana University McKinney School of Law. Mr. McMains served on staff for then-U.S. Senator Dan Coats from 2010-2017, first as his state director and then as senior counsel.

Mr. McMains was appointed to the Commission in April 2018.

## Marc D. Fine (Vice Chairman)



**Marc D. Fine**, of Evansville, is an attorney with the firm of Jackson Kelly, PLLC. Mr. Fine is a 1981 graduate of the Indiana University School of Business with a B.S. in finance, with distinction, and a 1984 graduate of the University of Illinois College Of Law. He is a member of the Board of Directors of German American Bank, based in Jasper, Indiana.

Mr. Fine was appointed to the Commission in October 2007.

## Susan Williams



**Susan Williams**, of Indianapolis, recently retired as President of Indiana Sports Corporation. During her tenure at the helm of ISC, Indianapolis was awarded Big Ten Men's and Women's Basketball Tournaments and Football Championship, the 2008 Olympic Diving Trials, 2012 Super Bowl, 2015 Men's Final Four, and 2016 Women's Final Four. Prior to arriving at ISC, Ms. Williams served as Executive Director of the Indiana State Office Building Commission. She served 13 years on the Indianapolis-Marion County City-County Council. Ms. Williams received her undergraduate degree from Franklin College and earned a master's degree from Indiana University.

Ms. Williams was appointed to the Commission in January 2013.

## Joseph C. Svetanoff (Secretary)



**Joseph C. Svetanoff - (Secretary)** of Crown Point, Indiana is a Partner at the Law Firm of Kopka Pinkus Dolin, P.C., and focuses his practice in the areas of: Municipal, Real Estate, and Corporate/Business Transaction. Mr. Svetanoff is a graduate of Butler University with a B.S. in Marketing, and a graduate of Valparaiso University School of Law. He is active in his community and has served on several non-for-profit organizations.

Mr. Svetanoff was appointed to the Commission in February of 2014.

# THE INDIANA GAMING COMMISSION

## Mike Herndon



**Mike Herndon**, of Shelbyville, recently retired as the Director of Insurance Fraud Investigations in the Enforcement Division of the Indiana Department of Insurance. Mr. Herndon was elected to serve as Sheriff of Shelby County, Indiana, for two terms. Also, he served in the Indiana House of Representatives from 2001 to 2002. Mike attended Indiana University and Herron Art Institute from 1969 to 1972 and is a graduate of the Indiana Law Enforcement Academy and the FBI National Academy.

Mr. Herndon was appointed to the Commission in October 2014.

## Jane Saxon, CPA



**Jane Saxon**, of Noblesville, is a senior manager at Somerset CPAs and Advisors. She is a graduate of the IUPUI Kelley School of Business and holds a B.S. in Accounting. Ms. Saxon is active in her community and has served several not-for-profit organizations. Most recently, Ms. Saxon served as the treasurer for the Noblesville Boys and Girls Club Auxiliary, whose mission is to support the Boys and Girls Club of Noblesville both financially and through volunteer efforts.

Ms. Saxon was appointed to the Commission in September 2016.

## Jason Dudich



**Jason Dudich** of Indianapolis, Indiana oversees the financial operations of the University of Indianapolis including budgeting, accounting, investments, benefits, long-term planning, real estate and capital. Prior to joining UIIndy, Mr. Dudich served as the Indiana State Budget Director, managing the state's \$34 billion annual operating and capital budget, collaborating with Gov. Eric Holcomb and staff, the Indiana General Assembly and state agency directors on fiscal policy, overall budget management and state policy issues. His prior experience includes budget management in the State of Illinois, CFO for the Indiana Commission for Higher Education, the City of Indianapolis and the Office of the Mayor, where he served as controller and then chief of staff for former Mayor Greg Ballard. Mr. Dudich earned a bachelor of science in public financial management from the School of Public and Environmental Affairs at Indiana University, Bloomington.

Mr. Dudich was appointed to the Commission in September of 2019.



**Indiana Gaming Commission**



## Executive Director's Annual Report



Sara Gonso Tait  
*Executive Director*

### Introduction

The Indiana Gaming Commission upheld high regulatory standards without compromise while simultaneously meeting the demands of statute, the pandemic, and the business needs of our regulated entities. I'll look back on Fiscal Year 2020 with great pride and appreciation for what the IGC staff accomplished.

Aside from those first years of launching riverboat gambling in Indiana, FY 2020 proved to be the busiest and most demanding year for the IGC. The IGC was charged with the following: launching retail and mobile sports wagering, implementing a new charity gaming statute, opening a new land based casino, beginning table games at the racino properties, and conducting numerous investigations on tight timelines, including important criminal investigations. The IGC was also tasked with reviewing other significant transactions, recruiting a new class of gaming agents, overseeing and transitioning to new databases, and ensuring our day-to-day regulatory duties were met. March then brought the COVID-19 global pandemic to our doorstep and the IGC began navigating its unprecedented, historic impacts.

The IGC welcomed a new Commissioner in September to replace Commissioner Rich McClain, who stepped down to spend more time with family. Commissioner Jason Dudich is vice president, chief financial officer and treasurer at University of Indianapolis. He previously served as State Budget Director in the Holcomb Administration and also worked for the City of Indianapolis and the Office of the Mayor, where he served as controller and chief of staff for former Mayor Greg Ballard. Commissioner Dudich offers a valued perspective and brings skills that will benefit the IGC.

Finally, it is with sadness that I report the January passing of the IGC's first Executive Director, Jack Thar. Jack laid the foundation for our agency and created the standard of integrity we still follow today. He was a distinguished United States Attorney, respected lawyer, trusted friend and wise mentor to many in the agency. His adept counsel, quick wit, infallible institutional memory and tremendous presence are missed by many.

## Casino Revenues

In the months before the casino closures in March, total state-wide win (AGR) was up \$47.3 million, a 3.5% increase from FY 19 for the same period of July through February. As a result, wagering tax increased by \$11.7 million, a 3.7% increase. The supplemental tax held steady during that time.

The closure of the casinos and the limited capacity when reopened resulted in significant losses to the casinos and the state. In the period of March through June, total state-wide win declined \$571.1 million, a 74.9% decline from FY 19 for the same period. As a result, wagering tax declined \$154.0 million, a decline of 72.9% and supplemental tax declined \$12.3 million, a 75.8% decline from FY 19 for the same period.

Overall for FY 20, state-wide total win (AGR) declined \$523.7 million, a 74.9% decline from FY 19. As a result, wagering tax declined \$142.3 million, a 27.0% decline and supplemental tax declined \$12.4 million, a 27.4% decline from FY 19.

## Retail and Mobile Sports Wagering Launch

Retail sports wagering commenced in Indiana on September 1, an aggressive launch date and the first day allowable by statute. Mobile sports wagering quickly followed with site launches the first week of October. IGC staff undertook a transparent, collaborative approach to creating our regulatory framework, partnering with the industry and soliciting assistance from other jurisdictions. As a risk-based regulator, we let statute guide us and created a regulatory framework that enhances the industry and protects consumers. The IGC accepted, and takes seriously, its charge of creating a strong regulatory environment that ensures the integrity of these activities in Indiana and staff should be commended for the extraordinary time, effort and thoughtfulness.

## Implementing the New Charity Gaming Statute

HEA 1517 (2019) created a new charity gaming article, IC 4-32.3, effective July 1. The agency bill, authored by House Public Policy Chairman Ben Smaltz and sponsored by Senate Public Policy Chairman Ron Alting, sought to remove statutory barriers and create more efficient and innovative charity gaming administration. IGC staff quickly implemented the new changes, created new forms and drafted updated emergency rules. Our goal was to create an environment where charities could be more successful in compliance and remove unnecessary burdens. We continue to be encouraged by the early results and feedback received from the organizations.

## Vigo County Application Process and Awarding of Casino Owner's License

On July 16, the IGC received Majestic Star Casino LLC's request to relocate gaming operations pursuant to IC 4-33-6-4.5, thereby triggering the application process for the Vigo County casino owner's license pursuant to IC 4-33-6.7-1. The IGC established a deadline of December 2. The voters of Vigo County spoke and the referendum consenting to inland casino gambling passed during November's general election. IGC staff received one application for the Vigo County casino owner's license on behalf of Spectacle Jack, LLC. Spectacle Jack, based in Terre Haute, demonstrated a strong commitment to bringing this economic development initiative to Vigo County. The Commission considered the application and statutory requirements in issuing the casino owner's

license in May. The investment calls for a Rocksino by Hard Rock branded facility on 25 acres off State Road 46 in Terre Haute.

### Caesars Southern Land Based Casino

A newly branded Caesars Southern casino opened its \$90 million, 100,000 square foot inland facility in December, 2019. Caesars has had a long, successful home in southern Indiana and it should be commended for its continued investment and commitment to the state and local community. The Caesars Southern transition in December saw an immediate positive impact. The total win (AGR) increased \$11.8 million, a 23.8% increase from year over year for the same period of December through February.

### Hard Rock Gary

The application to relocate inland in Gary met the conditions and factors required by statute, including agreement from the legislative body of the City of Gary, and the Commission subsequently approved of the application on December 17. This action resulted in the Majestic Star Casino II, LLC's casinos owner's license being relinquished and the first annual payment of \$4 million to the state general fund.

The new Gary inland casino will be a Hard Rock branded facility and Hard Rock will manage the day-to-day operations. Ground was broken in January on the anticipated \$300 million facility located near 29th Avenue and Burr Street and Interstate 94. The grand opening is tentatively scheduled for the second quarter of 2021.

### Table Games at Racinos

HEA 1015 (2019) authorized table games at the Indiana Grand and Harrah's Hoosier Park racino properties, effective January 1, 2020. Plans for both racino properties were approved by the Commission in December. Combined, the racinos hired over 500 people for jobs directly related to table games making a significant economic impact in those communities. Indiana Grand launched with 43 new table games and Hoosier Park with 28 tables, and both racinos are planning capital expansions to increase those numbers. The racinos had a combined total win (AGR) increase of \$19.0 million, a 26.0% increase from year over year for the same period of January and February.

### COVID-19 Impacts

In response to the COVID-19 pandemic, the IGC ordered casinos to close on March 16. Soon thereafter, all commercial casinos in the United States were closed. Given the unique environment presented at casinos and consistent with industry standards, the IGC issued minimum Health and Safety Guidelines for Reopening Casino Operations. After submission of detailed individual plans by the casinos, and working within Governor Holcomb's Roadmap to Safely Reopen Indiana ("Back on Track Plan"), Indiana's commercial casino properties reopened on Monday, June 15, with limited capacity.

The impacts of COVID-19 and the declared public health emergency also resulted in charity gaming and boxing



and mixed martial arts events not being held during this time. Similar to casinos, and in accordance with Phase 4 of the Back on Track Plan, charity gaming began again on June 15. However, boxing and mixed martial arts events remain on hold.

While sports wagering at the retail sportsbooks located within casinos and off track betting facilities closed during this period, both mobile sports wagering and paid fantasy sports continued. Sports wagering, which slowed as sporting events were cancelled around the globe, continues to ramp up as sporting events begin again.

### Eldorado and Caesars Merger

Eldorado Resorts announced a nearly \$17 billion dollar merger with Caesars Entertainment on June 24, 2019. The unparalleled proposed merger impacted Indiana more than any other regulatory jurisdiction. Of particular import was a new statutory requirement for the IGC to consider the “impact of any undue economic concentration of the ownership or control of a gaming license.” As originally proposed, the merger transaction would have resulted in Eldorado owning five (5) gaming licenses and controlling between 50% to 60% of Indiana gaming revenues. The Commission determined that Eldorado’s ownership and operation of the five (5) licenses would adversely impact the economic stability of the casino industry in Indiana and had the potential to negatively impact state and local revenues. In order to alleviate concerns regarding undue economic concentration, the Commission ordered on July 10 that Eldorado must enter into definitive agreements to divest of three (3) casinos by December 31, 2020.

### Looking Ahead

FY 2021 projects to be another action-packed year for the gaming industry in Indiana and IGC staff. The IGC looks forward to facilitating the projects and investments in Gary and Vigo County. Overseeing and ensuring a smooth divestiture process for the three (3) Caesars’ properties will be the first order of business. The IGC will subsequently review new casino owner’s applications and ensure benefit to both the state and all impacted local communities. In addition, in August 2019, the Pokagon Band of Potawatomi Indians formally requested to enter into negotiations for a gaming compact for class III gaming at its facility in South Bend, Indiana. Federal and state law task the Governor with negotiating and executing a tribal-state compact, and the Governor has appointed me as his designee for negotiations. If a tribal-state compact is negotiated and executed, it will undergo a legislative process for ratification pursuant to state law.

We all will continue to navigate the unprecedented challenges associated with COVID-19 and the unique challenges with operating casinos in this very difficult environment. The IGC stands ready to take on new projects and requests while ensuring the utmost integrity of gaming in Indiana.

Respectfully submitted,



**Sara Gonso Tait**

**Executive Director**



**Indiana Gaming Commission**



## FY 2020 TAX OVERVIEW

In FY 2020, gaming operations at Indiana casinos generated **\$385,434,640** in wagering tax, **\$32,862,470** in supplemental wagering tax, and **\$7,457,246** in sports wagering tax for a total of **\$425,754,357**. As of June 30, 2020, **\$15,327,505,314** in Wagering, Supplemental Wagering, and Sports Wagering Tax had been reported since inception.

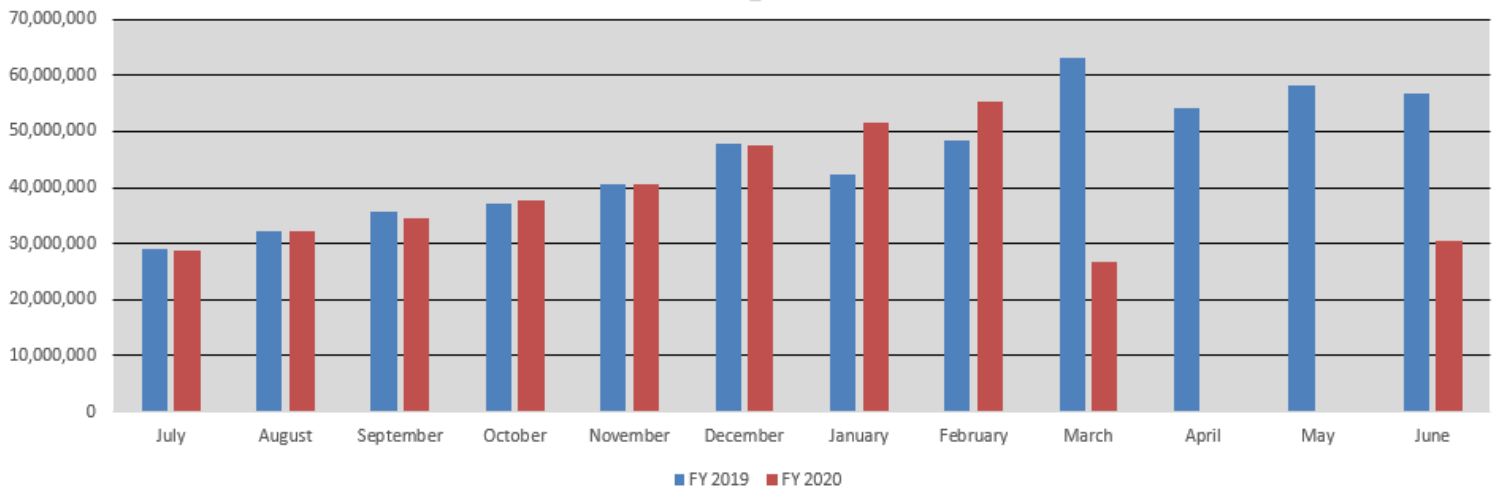
<b>FY 2020</b>	<b>Total Win</b>	<b>Wagering Tax</b>	<b>Supplemental Wagering Tax</b>	<b>Sports Wagering Tax</b>	<b>Total Tax</b>
Ameristar	164,433,044	40,017,275	4,967,274	3,393,981	48,378,530
Belterra	79,300,818	14,323,832	2,161,630	117,490	16,602,952
Blue Chip	115,849,552	25,213,944	3,816,627	1,432,211	30,462,782
Caesars Southern Indiana	171,726,720	41,618,870	3,688,315	96,428	45,403,613
French Lick	68,518,707	11,913,594	N/A	337,419	12,251,013
Harrah's Hoosier Park	169,094,369	39,572,113	N/A	378,301	39,950,414
Hollywood	132,972,697	30,280,800	3,312,117	505,537	34,098,454
Horseshoe Hammond	309,316,645	91,125,348	7,853,276	807,754	99,786,378
Indiana Grand	224,978,907	50,814,903	N/A	259,457	51,074,360
Majestic Star	65,257,430	10,510,108	1,699,805	N/A	12,209,913
Majestic Star II	41,172,489	3,352,394	1,242,919	N/A	4,595,313
Rising Star	33,767,447	2,436,247	1,082,593	4,583	3,523,422
Tropicana Evansville	112,782,729	24,255,213	3,037,915	124,085	27,417,213
<b>TOTALS</b>	<b>\$1,689,171,554</b>	<b>\$385,434,640</b>	<b>\$32,862,470</b>	<b>\$7,457,246</b>	<b>\$425,754,357</b>

# FY 2019 TAX COMPARISON TO FY 2020

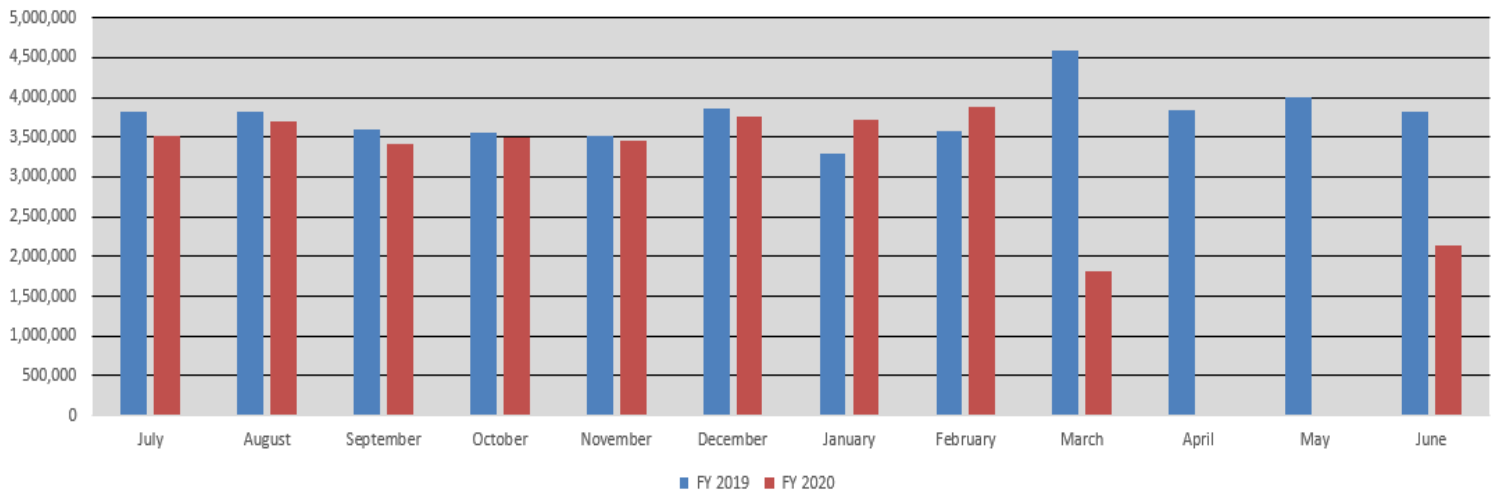
WAGERING TAX	FY 2019	FY 2020	DIFFERENCE	%
July	29,106,572	28,856,279	(250,292)	-0.86%
August	32,289,958	32,255,534	(34,423)	-0.11%
September	35,629,196	34,384,261	(1,244,934)	-3.49%
October	37,235,392	37,759,887	524,495	1.41%
November	40,476,298	40,698,840	222,542	0.55%
December	47,682,421	47,598,635	(83,785)	-0.18%
January	42,382,276	51,493,176	9,110,900	21.50%
February	48,291,652	55,250,764	6,959,112	14.41%
March	63,088,819	26,619,611	(36,469,207)	-57.81%
April	54,252,108	0	(54,252,108)	-100.00%
May	58,153,126	0	(58,153,126)	-100.00%
June	56,889,332	30,517,648	(26,371,683)	-46.36%
<b>TOTAL</b>	<b>\$545,477,150</b>	<b>\$385,434,640</b>	<b>(\$160,042,509)</b>	<b>-29.34%</b>

SUPPLEMENTAL WAGERING TAX	FY 2019	FY 2020	DIFFERENCE	%
July	3,821,278	3,523,527	(297,750)	-7.79%
August	3,816,790	3,700,303	(116,486)	-3.05%
September	3,586,308	3,413,278	(173,029)	-4.82%
October	3,562,127	3,492,894	(69,232)	-1.94%
November	3,506,005	3,446,356	(59,648)	-1.70%
December	3,861,742	3,751,035	(110,706)	-2.87%
January	3,284,850	3,714,847	429,997	13.09%
February	3,579,669	3,878,545	298,876	8.35%
March	4,594,485	1,808,580	(2,785,904)	-60.64%
April	3,845,204	0	(3,845,204)	-100%
May	4,004,109	0	(4,004,109)	-100%
June	3,815,482	2,133,101	(1,682,380)	-44.09%
<b>TOTAL</b>	<b>\$45,278,049</b>	<b>\$32,862,470</b>	<b>(\$12,415,578)</b>	<b>-27.42%</b>

## WAGERING TAX COMPARISON FY 2019 TO FY 2020

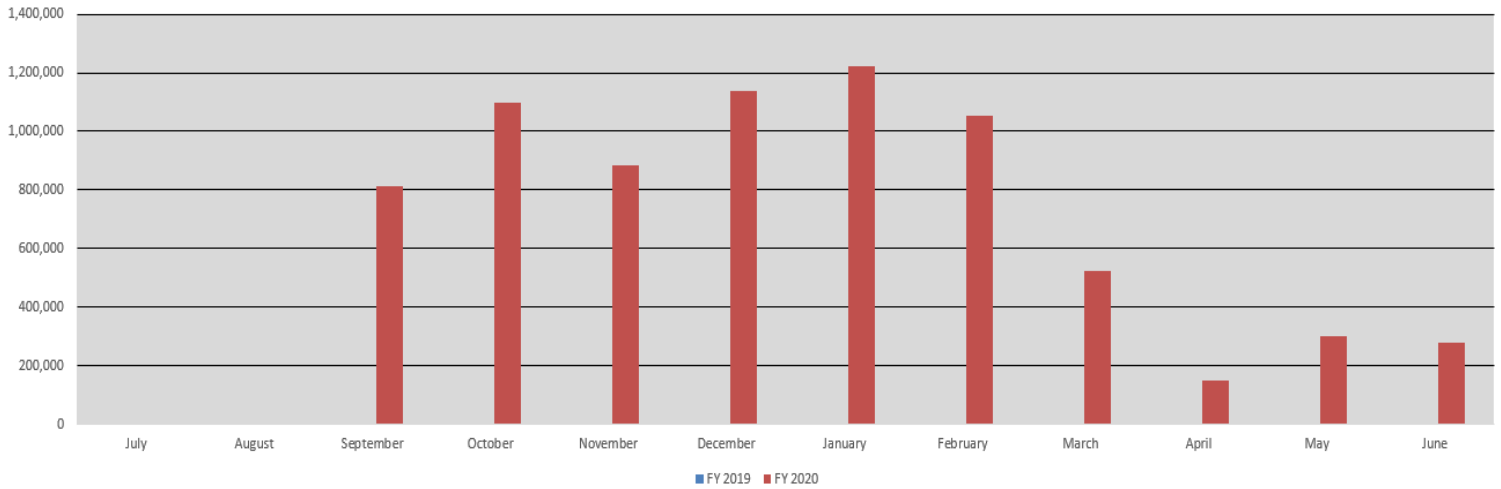


## SUPPLEMENTAL WAGERING TAX COMPARISON FY 2019 TO 2020



<b>SPORTS WAGERING TAX</b>	<b>FY 2019</b>	<b>FY 2020</b>	<b>DIFFERENCE</b>	<b>%</b>
<b>July</b>	0	0	0	100.00%
<b>August</b>	0	0	0	100.00%
<b>September</b>	0	813,103	813,103	100.00%
<b>October</b>	0	1,096,161	1,096,161	100.00%
<b>November</b>	0	883,362	883,362	100.00%
<b>December</b>	0	1,139,041	1,139,041	100.00%
<b>January</b>	0	1,221,796	1,221,796	100.00%
<b>February</b>	0	1,053,811	1,053,811	100.00%
<b>March</b>	0	522,086	522,086	100.00%
<b>April</b>	0	148,189	148,189	100.00%
<b>May</b>	0	302,097	302,097	100.00%
<b>June</b>	0	277,600	277,600	100.00%
<b>TOTAL</b>	<b>\$0</b>	<b>\$7,457,247</b>	<b>\$7,457,247</b>	<b>100.00%</b>

**SPORTS WAGERING TAX FY 2020**



# REVENUES & EXPENDITURES

## FEES

**\$16,969,326**

### Occupational Licensing

Applications	\$1,148,446
Permanent/Renewal	\$579,973

**Subtotal \$1,728,419**

### Casino Licensing

Applications for merger/buyout	\$150,000
Permanent/Renewal	\$405,600
Other Licenses***	\$9,000,000

**Subtotal \$9,555,600**

### Supplier Licensing

Applications:	\$80,000
Permanent/Renewal:	\$225,000
Other - Junketeer:	\$6,325

**Subtotal \$311,325**

### Charity Gaming\*

Licensing	\$3,896,710
Penalties/Misc.	\$27,272

**Subtotal \$3,923,982**

### Athletic Division

Licensing	\$22,048
Closed Circuit Tax	\$0
Event Tax	\$24,815
Penalties	\$0

**Subtotal \$46,863**

### Fantasy Sports

Applications	\$0
Renewal	\$30,000

**Subtotal \$30,000**

\*Does not include Charity Gaming Excise Tax of \$1,025,075 collected by IDOR.

\*\*Fully reimbursed by riverboat casinos and racinos.

\*\*\*Comprised of Vigo County and Gary fees.

### Sports Wagering Division

Casinos & Off Track Betting	\$1,500,000
Vendor	\$1,450,000
Registrant	\$78,145
Service Provider	\$40,000

**Subtotal \$3,068,145**

## FINES

**\$409,375**

Riverboats	\$239,606
Suppliers	\$45,500
Voluntary Exclusion Program (V.E.P.)	\$124,269

## EXPENDITURES

**\$26,969,221**

### IGC Administration

Salary/Wages	\$2,969,016
Other Operating & Encumbrance	\$425,528

**Subtotal \$3,394,544**

### Charity Gaming Enforcement

Salary/Wages	\$2,967,087
Lottery Surplus	\$1,291,281
Other Operating & Encumbrance	\$417,214

**Subtotal \$4,675,582**

### Athletic Division

Salary/Wages	\$141,798
Other Operating & Encumbrance	\$12,240
Less Reimbursements	-\$6,814

**Subtotal \$147,224**

### Gaming Enforcement\*\*

Salary/Wages	\$17,578,684
Other Operating & Encumbrance	\$1,173,187

**Subtotal \$18,751,871**

# MBE/WBE UTILIZATION

## Disparity Study

Statute requires the IGC to establish annual goals for the use of minority and women-owned enterprises (M/WBE). These goals must be derived from a statistical analysis of utilization study of casino contracting and purchases. Such an analysis, also called a disparity study, must be updated every five years.

In keeping with its statutory mandate, an update of the IGC’s study was completed in November 2017. The Indiana University Public Policy Institute completed the study on our behalf, examining the contracting and purchasing practices of Indiana’s casinos from 2012 through 2017. Based upon actual purchase data provided by the casinos and audited by IGC staff, the study period reviewed over \$1.7 billion in spending on goods and services.

In addition to a review of purchasing, also called utilization, a disparity study must also seek to establish capacity, which is a measure of all firms ready, willing and able to provide goods and services to Indiana’s river-boat casinos. The capacity estimate derived from the study is below.

<u>Capacity Estimates</u>	<u>MBE</u>	<u>WBE</u>
<b>Construction</b>	10.7%	9.7%
<b>Procurement of Supplies</b>	1.7%	3.7%
<b>Professional Services</b>	3.5%	6.5%
<b>Other Services</b>	2.2%	6.4%

The IGC adopted the study at its November meeting in Resolution 2017-219 and will continue to monitor M/WBE utilization annually. The full disparity study is available at [www.in.gov/igc](http://www.in.gov/igc).

## 2019 Expenditures

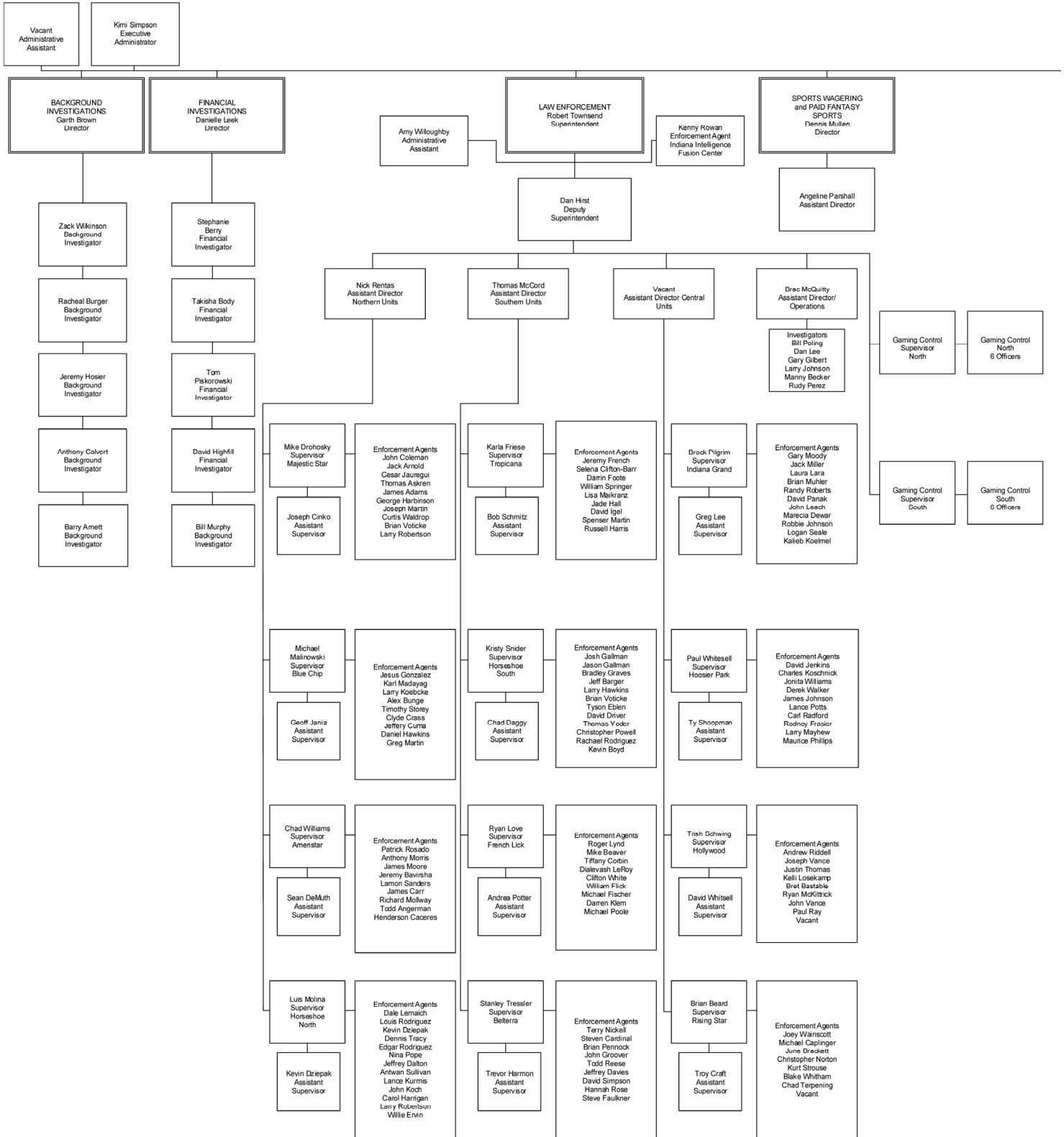
The table below indicates spending in each category in CY 2019. Not reflected in the chart, but of importance to note, is that casinos spent \$170.3 million with Indiana firms, including non-M/WBE, during this period.

<u>Purchase Type</u>	<u>Amount</u>	<u>MBE Spend</u>	<u>WBE Spend</u>
Construction	\$94,143,341	54.64%	6.59%
Procurement	\$212,558,737	6.30%	9.96%
Professional Services	\$23,344,999	5.40%	7.83%
Non-Professional Services	\$53,908,306	6.66%	7.41%
<b><u>TOTAL</u></b>	<b>\$383,955,384</b>		



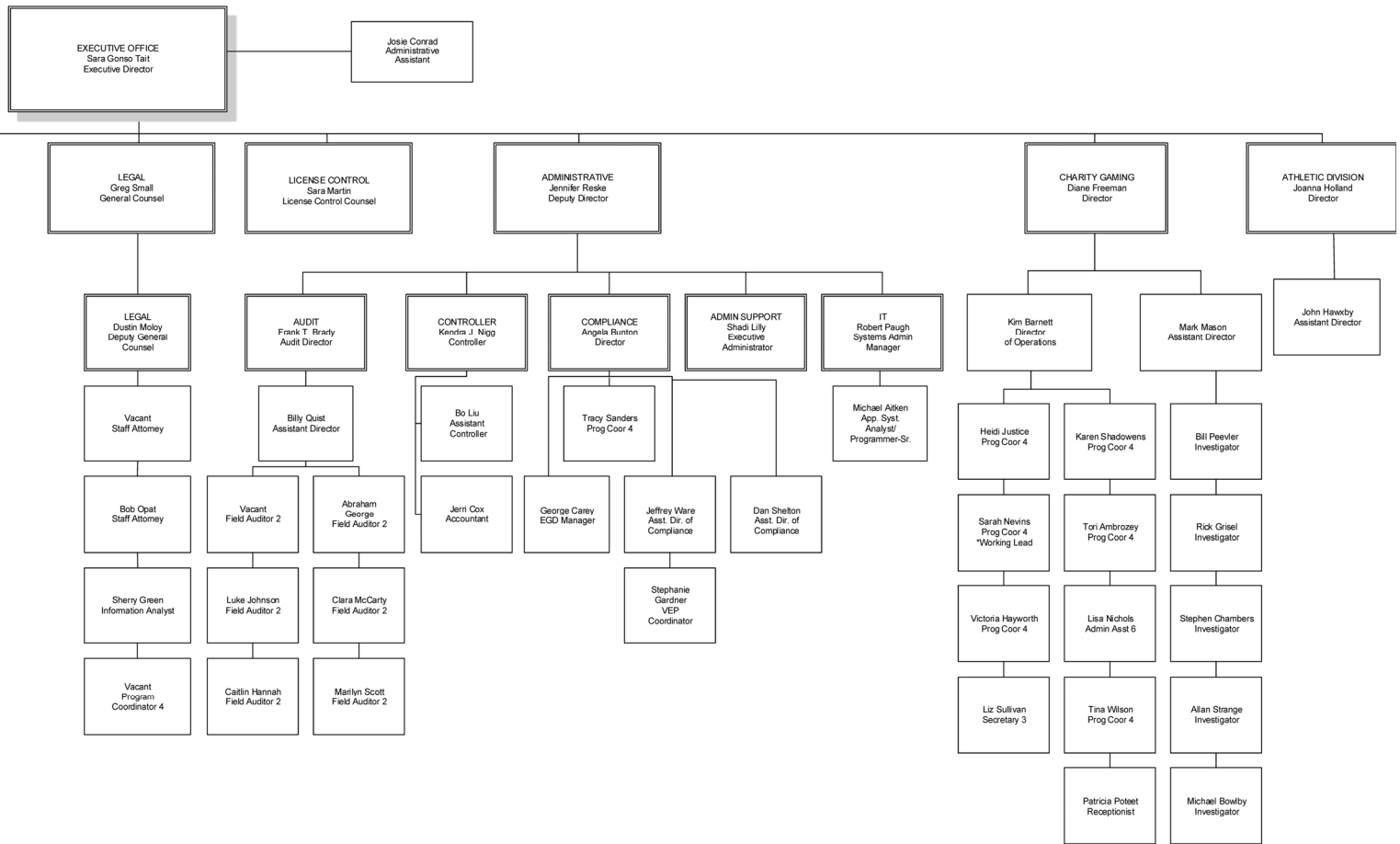
Jennifer Reske  
Deputy Director

# ORGANIZATIONAL CHART





# ORGANIZATIONAL CHART



As of: June 30, 2020



# Divisions



# DIVISION STATISTICS

## LEGAL DIVISION

### Occupational Licensing

Temporary Licenses Issued	5,428
Permanent Licenses Issued	3,298
License Renewals	8,951
Permanent License Revocations	3
Application Denials	11
Felony Waivers	7
Felony Waivers Granted	3
Settlements in Lieu of Disciplinary Action	32

### Supplier Licensing

Supplier License Inquiries Reviewed	225
Permanent Supplier License Granted	3
Renewal of Supplier License	29
Temporary Supplier License Granted	14
Expired Supplier Licenses	2

### Junket Registration

Junket Operator Certificates Issued	1
Junketeer Certificates Issued	3
Total Registered Junket Operators	24
Total Registered Junketeers	27

### Exclusion Statistics

Patrons Excluded	42
Exclusion Appeals	3
Removals from Exclusion List	5
Actions For Civil Penalty	2
Civil Penalty Collected	\$3,040
Currently on Exclusion List	850

### Record Requests Statistics

Public Record Requests Received	59
Number of Records Request Documents Released	4,413

## SPORTS WAGERING DIVISION

### Sports Wagering

Certificate of Authority Licenses Issued	15
Vendor Licenses Issued	13
Sports Wagering Service Provider Licenses Issued	4
Registrant Licenses Issued	155
Promotions Reviewed	312
System Assessments Reviewed	11

## COMPLIANCE DIVISION

### Table Games

New Table Games Reviewed	9
New Table Games Approved	5
New Table Games Pending	5
Table Shipments Approved	227
Layout Schematics Approved	199

### Promotions / Tournaments

Received	2,260
Reviewed	1,506
Approved	389
Disapproved	0
Pending	0
Cancelled	336

*The Commission issued 303 recommendations on waiver requests and disciplinary actions against casino, supplier licensees and sports wagering operators with \$730,300 levied in fines.*

## ENFORCEMENT DIVISION

### Enforcement

Regulatory Investigation	2,747
Criminal Investigations	1,427
Individuals Charged	534

## GAMING CONTROL DIVISION

### Illegal Gambling

Criminal Investigations	132
Inspections Conducted	4,335
Illegal Gambling Devices Confiscated	59
Search Warrants Served	12

## BACKGROUND/FINANCIAL INVESTIGATIONS DIVISION

### Investigations

Level 1 Investigations	90
Level 2 Investigations	4,885
Level 3 Investigations	1,668

*11,919 hours were logged and the division maintained a billable rate of 70%.*

## ATHLETIC DIVISION

### Boxing

Judges Issued	6
Managers Issued	4
Promoters Issued	4
Referees Issued	4
Seconds Issued	133
Timekeepers Issued	5
Trainers Issued	1
Professional Boxers Issued	81
Professional Boxing Events	10

### Mixed Martial Arts

Amateur MMA Sanctioning Bodies Issued	1
Judges Issued	2
Managers Issued	1
Matchmaker	1
Promoters Issued	4
Referees Issued	0
Seconds Issued	132
Timekeepers Issued	3
Trainers Issued	4
Professional Mixed martial Artists	48
Event Physicians Issued	5
MMA National ID's Issued	58
Mixed Martial Arts Pro-Am Events	8

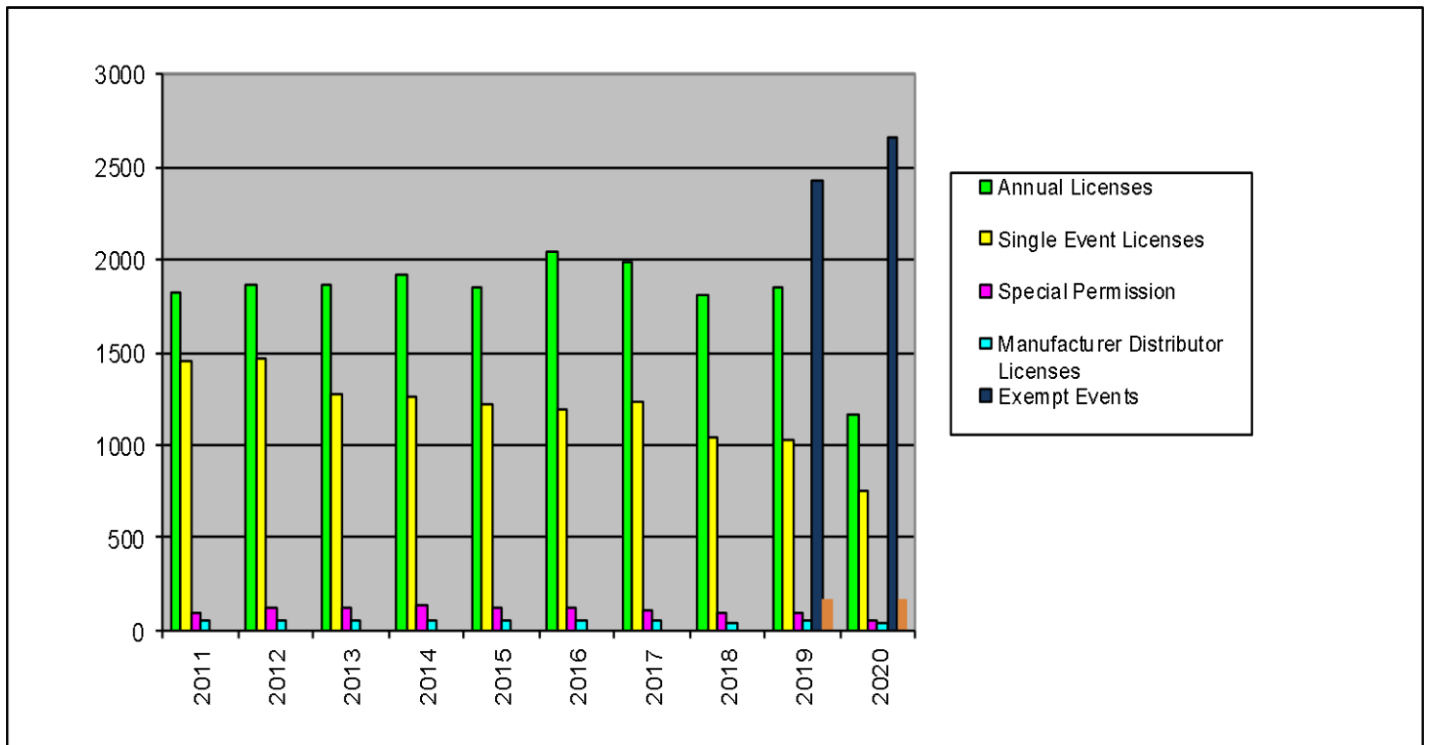
## CHARITY GAMING DIVISION

### Charity Gaming\*

Licenses Issued	2,007
Non-Licensed Events	2,664
Affiliate Events	164
Qualified Organizations	3,906
Qualified Distributors	27
Qualified Manufactures	11
Compliance Investigations Conducted	158
Gross Income Reported	\$381,531,579
Licensing Fees Collected	\$3,896,660
Prize Payouts	\$295,149,458
Penalties	\$27,272

\* These statistics will change as not all financial reports have been received and processed for this period.

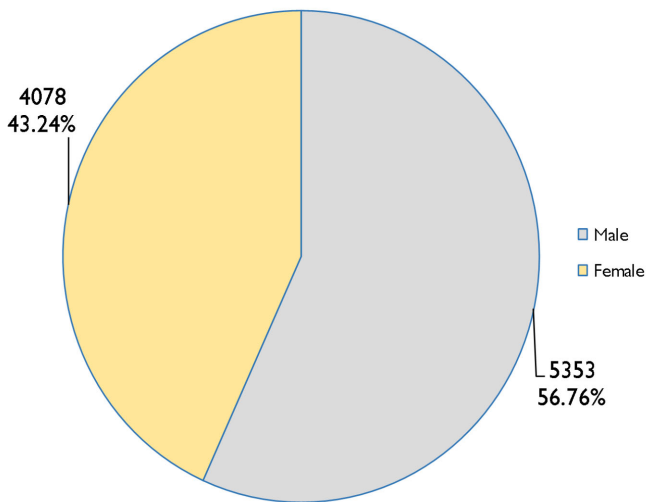
## Figure 1. Charity Gaming Licenses Issued



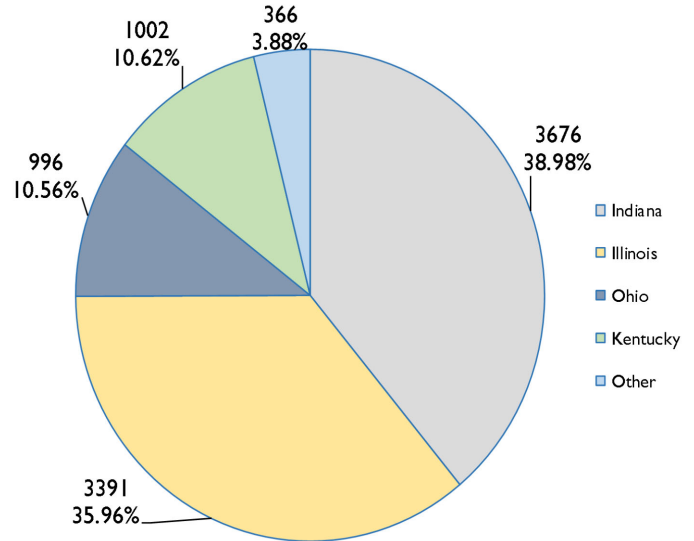
## VEP Statistics

There were **5,978** active members from thirty-eight different states and two from Canada in the Voluntary Exclusion Program as of July 1, 2020. The graphs below display the program participants, as categorized by age, gender, home state and length of exclusion. In FY 2020, 24 forfeitures were approved by the Commission and resulted in approximately \$37,647 in forfeitures.

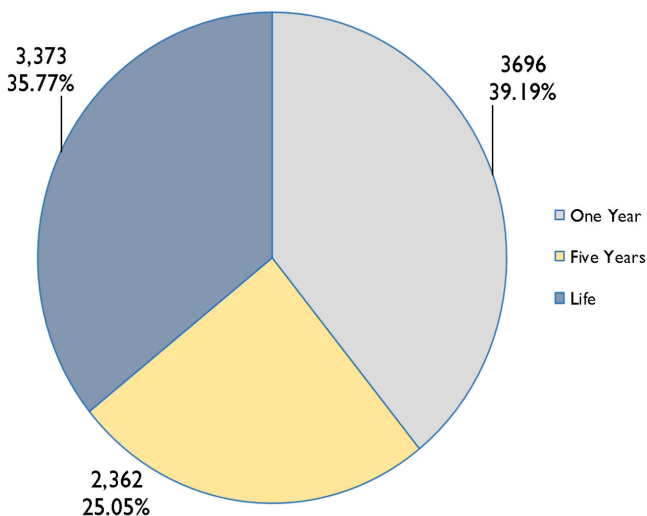
### Member Gender



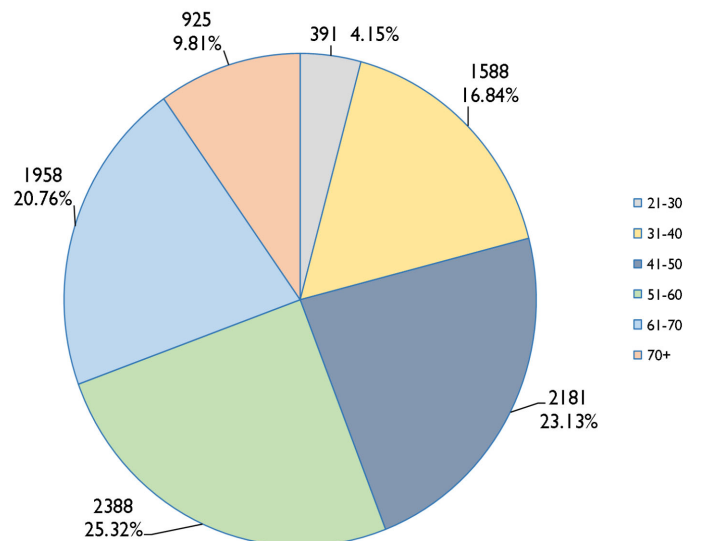
### Member State



### Member Exclusion Length



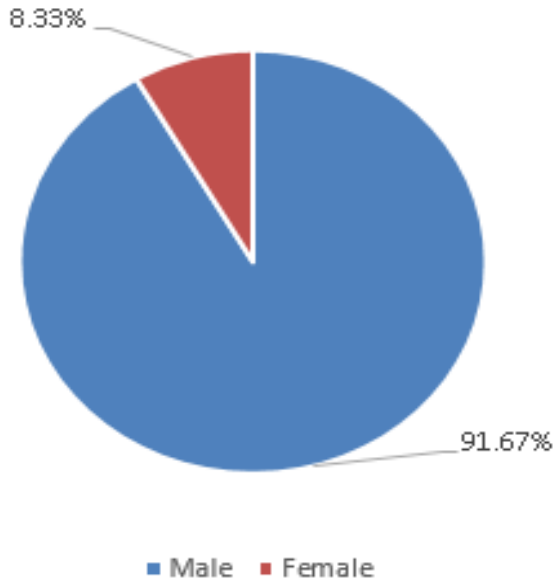
### Member Age



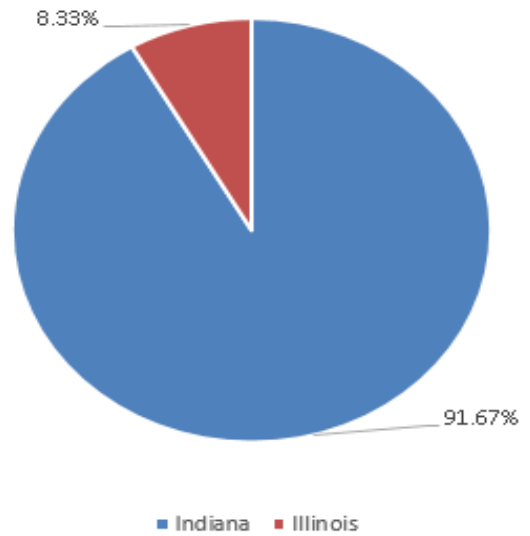
## ISRP Statistics

The IGC created and implemented the Internet Self-Restriction Program (ISRP) on September 1, 2019. ISRP only applies to mobile sports wagering. Mobile sports wagering is defined as sports wagering conducted through computers or mobile or interactive devices and accepted in the state of Indiana through an online sports wagering system approved by the IGC. To date, twelve (12) individuals have signed up for ISRP. The graphs below display the program participants, as categorized by age, gender, home state and length of exclusion.

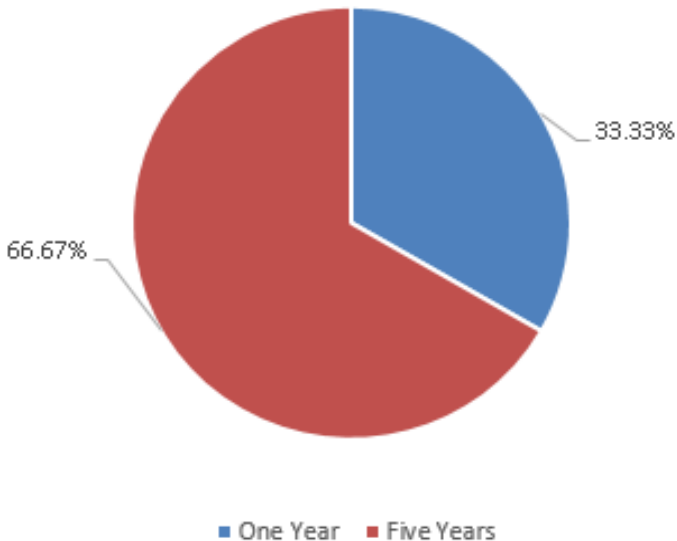
### Member Gender



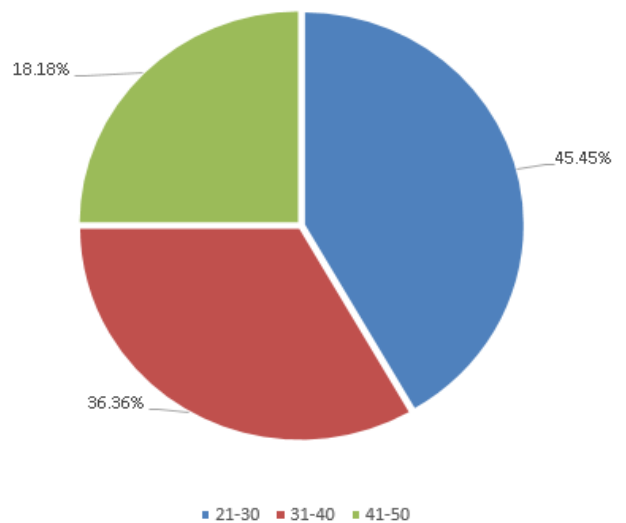
### Member State



### Member Exclusion Length



### Member Age





# Indiana Casinos



# INDIANA CASINO LOCATIONS



## Indiana Casino Locations





# AMERISTAR CASINO

## AMERISTAR CASINO ★ HOTEL

**General Manager:**

Matthew Schuffert

**Address:**

777 Ameristar Blvd.  
East Chicago, Indiana 46312

**Website:**

<https://eastchicago.ameristar.com>



Date Opened: April 18, 1997

Gaming Space: 70,202 Square Feet

Electronic Gaming Devices: 1,793

Table Gaming Positions: 609

Restaurants: 4

Hotel: 288 Rooms

Total Taxes: \$48,378,530

LDA Payments: \$7,195,807

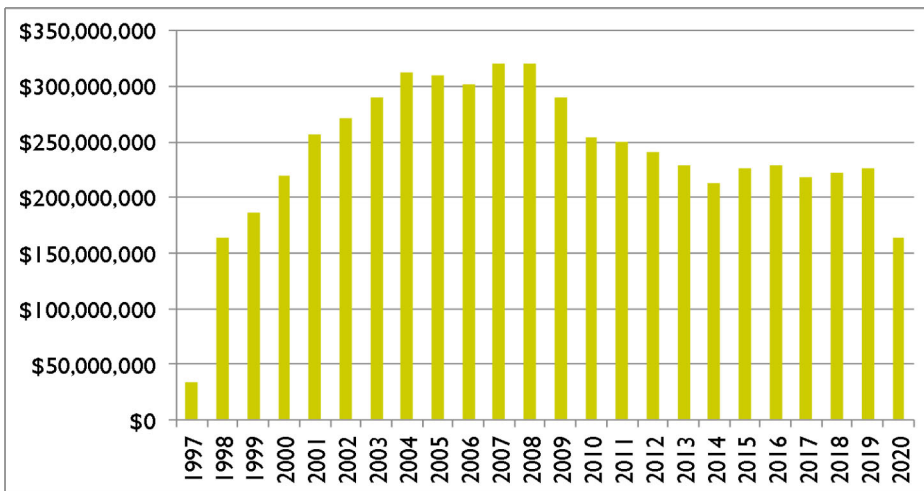
Total Employment: 991

Minority Employment: 70.74%

County Employment: 76.19%

Indiana Employment: 84.76%

### Yearly Win Totals



Sportsbook: Operated by Ameristar Casino

Sports Wagering Kiosks: 19

Sports Wagering Vendors Licensed: Crown IN Gaming, LLC d/b/a Drafkings (Mobile) and Score Digital Sports Ventures Inc. d/b/a theScore Bet (Mobile)

# BELTERRA CASINO



**General Manager:**

Peter Chu

**Address:**

777 Belterra Dr.  
Florence, Indiana 47020

**Website:**

[www.belterracasino.com](http://www.belterracasino.com)

Date Opened: October 27, 2000

Gaming Space: 54,758 Square Feet

Electronic Gaming Devices: 1,169

Table Gaming Positions: 285

Restaurants: 6

Hotel: 608 rooms

Total Taxes: \$16,602,952

LDA Payments: \$1,110,246

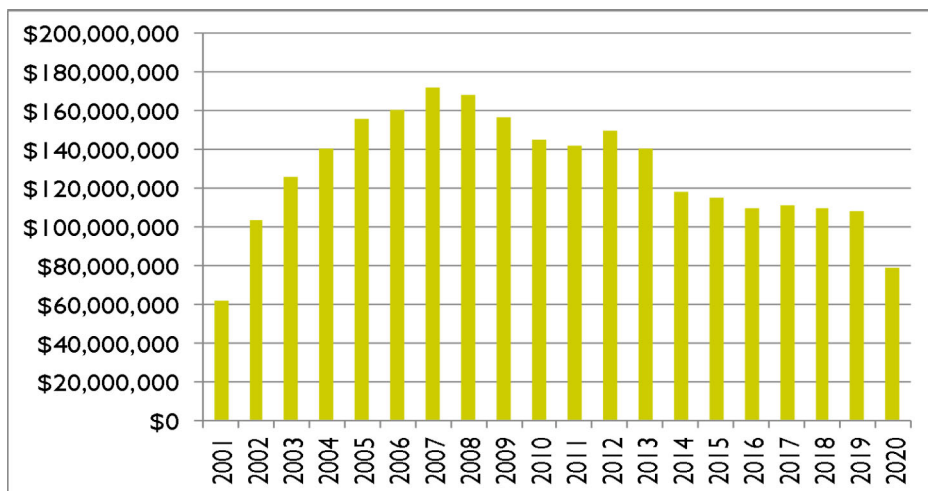
Total Employment: 853

Minority Employment: 13.36%

County Employment: 46.30%

Indiana Employment: 64.71%

## Yearly Win Totals



Sportsbook: Operated by vendor Betfair Interactive US, LLC d/b/a FanDuel Sportsbook

Sports Wagering Kiosks: 7

Sports Wagering Vendors Licensed: Betfair Interactive US, LLC d/b/a FanDuel Sportsbook (Retail) and Roar Digital, LLC d/b/a BetMGM (Mobile)

# BLUE CHIP CASINO



**General Manager:**

Brenda Temple

**Address:**

777 Blue Chip Drive  
Michigan City, Indiana 46360

**Website:**

[www.bluechipcasinocom](http://www.bluechipcasinocom)



Date Opened: April 18, 1997

Gaming Space: 65,375 Square Feet

Electronic Gaming Devices: 1,655

Table Gaming Positions: 436

Restaurants: 7

Hotel: 486 rooms

Total Taxes: \$30,462,782

LDA Payments: \$1,370,372

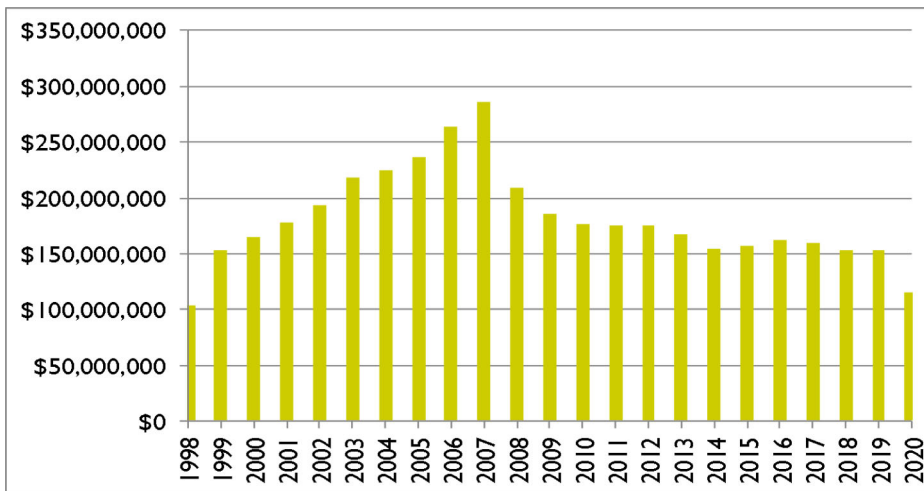
Total Employment: 968

Minority Employment: 34.00%

County Employment: 62.10%

Indiana Employment: 96.10%

## Yearly Win Totals



Sportsbook: Operated by vendor Betfair Interactive US, LLC d/b/a FanDuel Sportsbook

Sports Wagering Kiosks: 15

Sports Wagering Vendors Licensed: Betfair Interactive US, LLC d/b/a FanDuel Sportsbook (Retail and Mobile)

# FRENCH LICK RESORT CASINO



**General Manager:**

Chris Leininger

**Address:**

8670 West State Road 56  
French Lick, Indiana 47432

**Website:**

[www.frenchlick.com/gaming](http://www.frenchlick.com/gaming)



Date Opened: November 1, 2006

Gaming Space: 55,289 Square Feet

Electronic Gaming Devices: 826

Table Gaming Positions: 242

Restaurants: 8

Hotel: 748 rooms

Total Taxes: \$12,251,013

LDA Payments: \$2,763,371

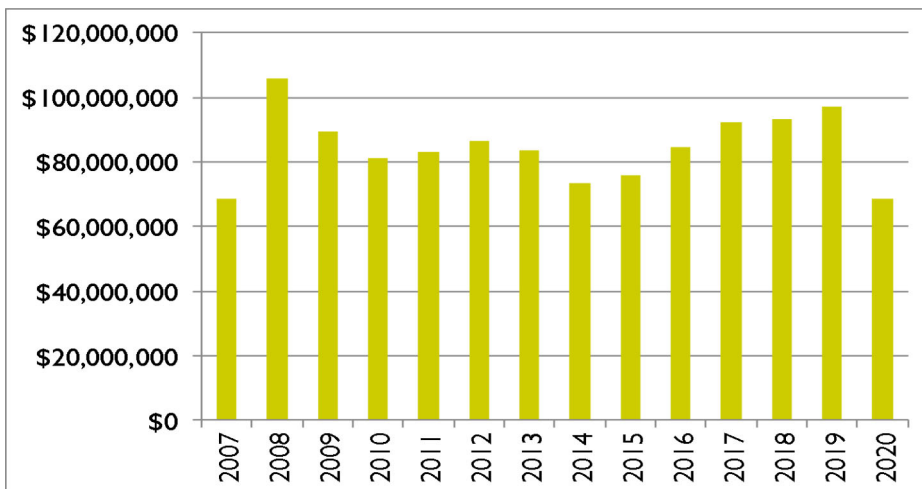
Total Employment: 1,790

Minority Employment: 10.00%

County Employment: 66.00%

Indiana Employment: 98.00%

## Yearly Win Totals



Sportsbook: Operated by French Lick Resort

Sports Wagering Kiosks: 13

Sports Wagering Vendors Licensed: Rush Street Interactive, LLC (Mobile)

# TROPICANA EVANSVILLE



**General Manager:**

John Chaszar

**Address:**

421 N.W. Riverside Drive  
Evansville, Indiana 47708

**Website:**

[www.tropevansville.com](http://www.tropevansville.com)



Date Opened: December 8, 1995

Gaming Space: 40,724 Square Feet

Electronic Gaming Devices: 1,128

Table Gaming Positions: 316

Restaurants: 5

Hotel: 339 rooms

Total Taxes: \$27,417,213

LDA Payments: \$7,179,105

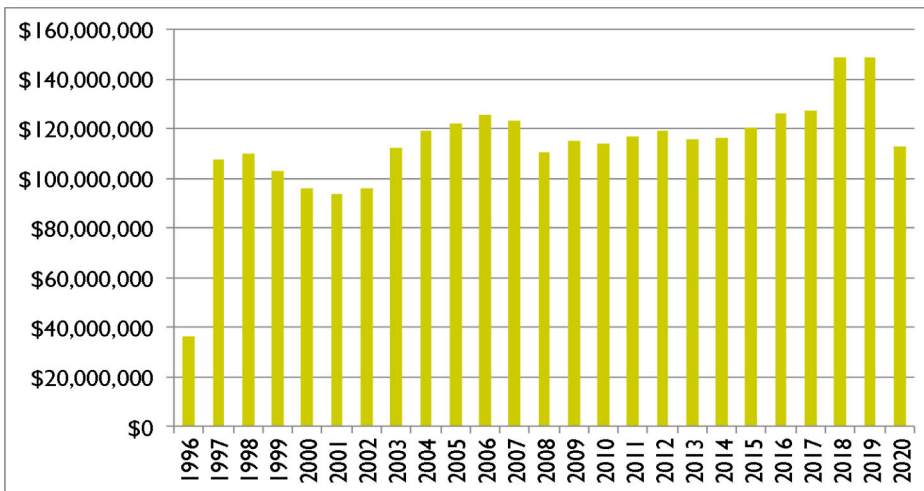
Total Employment: 684

Minority Employment: 22.08%

County Employment: 73.68%

Indiana Employment: 88.30%

## Yearly Win Totals



Sportsbook: Operated by vendor American Wagering, Inc. d/b/a William Hill Sports Book

Sports Wagering Kiosks: 4

Sports Wagering Vendors Licensed: American Wagering, Inc. d/b/a William Hill Sports Book (Retail)

# HOLLYWOOD CASINO



**General Manager:**

Mike Galle

**Address:**

777 Hollywood Blvd.  
Lawrenceburg, Indiana 47025

**Website:**

[www.hollywoodindiana.com](http://www.hollywoodindiana.com)



Date Opened: December 13, 1996

Gaming Space: 159,500 Square Feet

Electronic Gaming Devices: 1,521

Table Gaming Positions: 563

Restaurants: 6

Hotel: 300 rooms

Total Taxes: \$34,098,454

LDA Payments: \$8,749,928

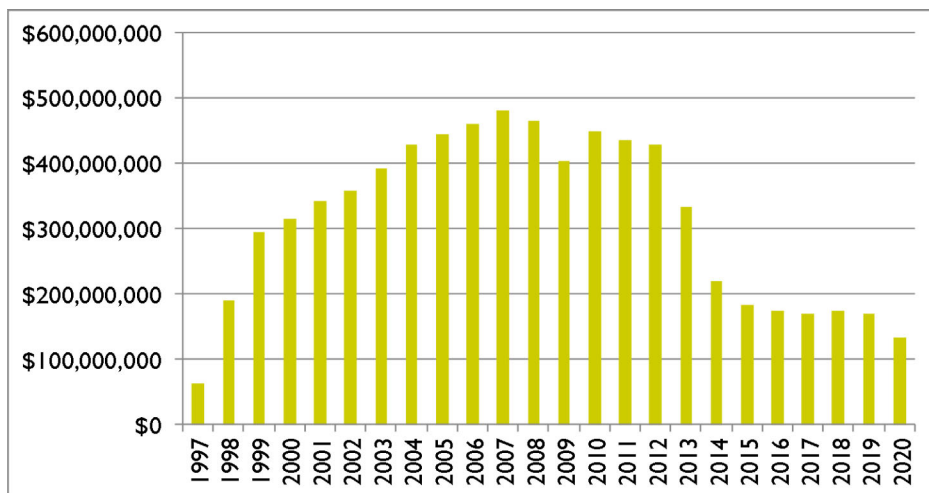
Total Employment: 815

Minority Employment: 7.70%

County Employment: 47.00%

Indiana Employment: 62.30%

## Yearly Win Totals



Sportsbook: Operated by Hollywood Casino

Sports Wagering Kiosks: 25

Sports Wagering Vendors Licensed: Penn Sports Interactive, LLC (Mobile) and PointsBet Indiana LLC d/b/a PointsBet (Mobile)

# HARRAH'S HOOSIER PARK CASINO



**General Manager:**

Trent McIntosh

**Address:**

4500 Dan Patch Circle  
Anderson, Indiana 46013

**Website:**

[www.caesars.com/harrahs-hoosier-park](http://www.caesars.com/harrahs-hoosier-park)



Date Opened: May 29, 2008

Gaming Space: 55,276 Square Feet

Electronic Gaming Devices: 1,517

Table Gaming Positions: N/A

Restaurants: 8

Hotel: N/A

Total Taxes: \$39,950,414

LDA Payments: N/A

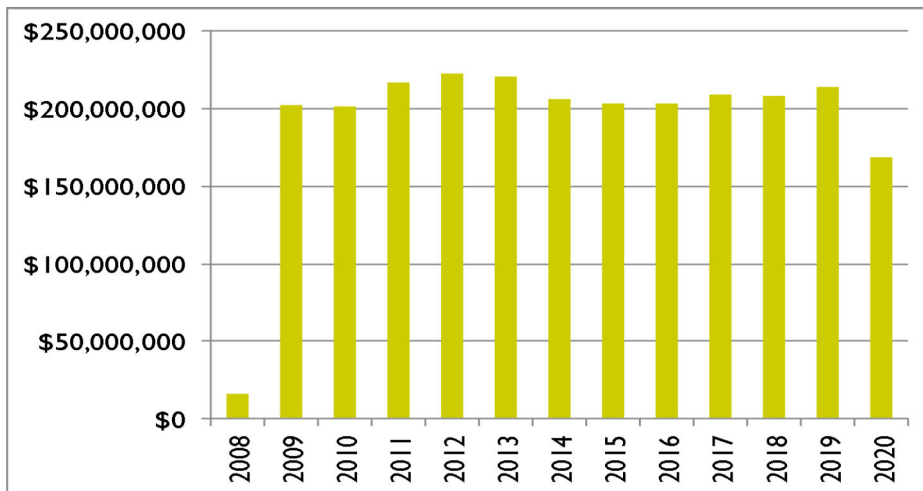
Total Employment: 1,058

Minority Employment: 24.95%

County Employment: 58.60%

Indiana Employment: 99.43%

## Yearly Win Totals



Sportsbook: Operated by Harrah's Hoosier Park

Satellite Sports Wagering Facilities Operated: Hoosier Park, LLC d/b/a Winner's Circle Pub Grille and Off Track Betting - Indianapolis and Hoosier Park, LLC d/b/a Winner's Circle Brew, Pub and Off Track Betting - New Haven

Sports Wagering Kiosks: Harrah's Hoosier Park 10, Indianapolis 11 and New Haven 9

Sports Wagering Vendors Licensed: None

# HORSESHOE CASINO HAMMOND



**General Manager:**

Dan Nita

**Address:**

777 Casino Center Dr.  
Hammond, Indiana 46320

**Website:**

[www.caesars.com/horseshoe-hammond](http://www.caesars.com/horseshoe-hammond)

Date Opened: June 29, 1996

Gaming Space: 108,000 Square Feet

Electronic Gaming Devices: 2,135

Table Gaming Positions: 1,105

Restaurants: 8

Hotel: N/A

Total Taxes: \$99,786,378

LDA Payments: \$24,909,059

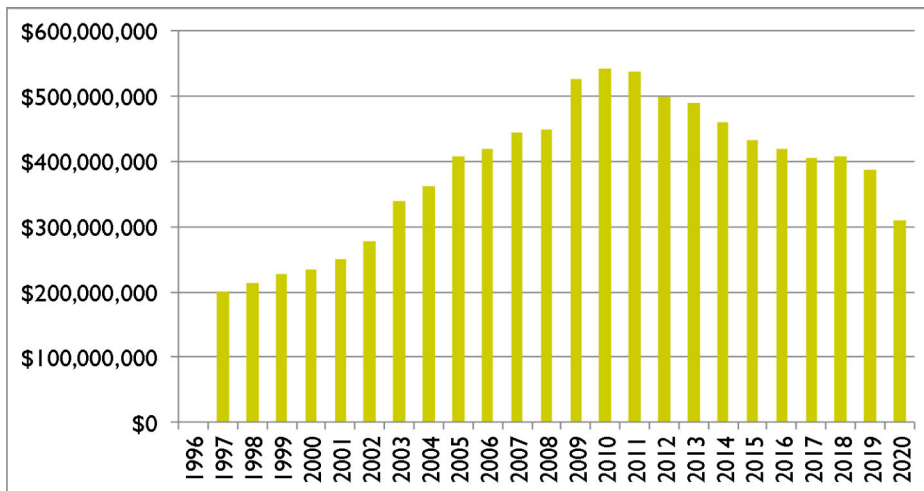
Total Employment: 1,745

Minority Employment: 64.30%

County Employment: 64.60%

Indiana Employment: 70.90%

## Yearly Win Totals



Sportsbook: Operated by Horseshoe Hammond Casino

Sports Wagering Kiosks: 16

Sports Wagering Vendors Licensed: Caesars Interactive Entertainment, LLC d/b/a CIE (Mobile) and Unibet Indiana LLC (Mobile)



# CAESARS SOUTHERN INDIANA



**General Manager:**

Bradley Seigel

**Address:**

11999 Casino Center Dr. S.E.  
Elizabeth, Indiana 47117

**Website:**

[www.caesars.com/caesars-southern-indiana](http://www.caesars.com/caesars-southern-indiana)



Date Opened: November 20, 1996

Gaming Space: 74,421 Square Feet

Electronic Gaming Devices: 1,203

Table Gaming Positions: 738

Restaurants: 6

Hotel: 503 Rooms

Total Taxes: \$45,403,613

LDA Payments: \$6,831,832

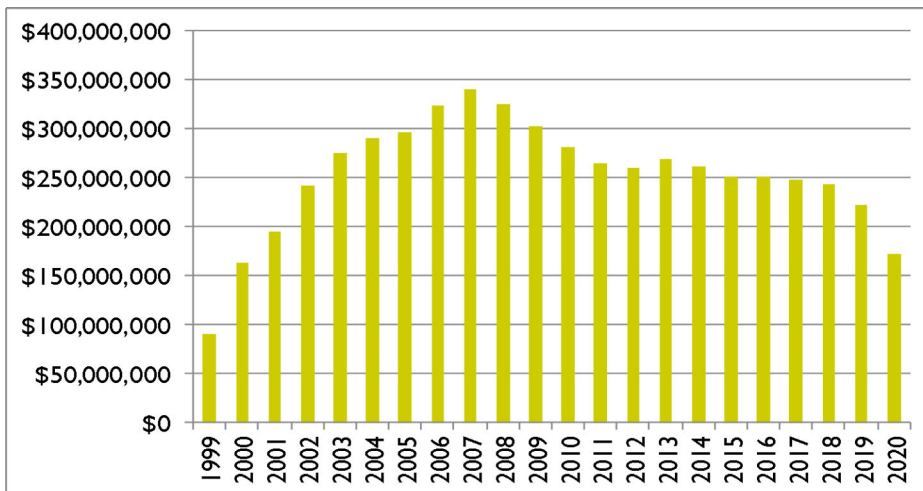
Total Employment: 1,214

Minority Employment: 18.00%

County Employment: 19.00%

Indiana Employment: 69.00%

## Yearly Win Totals



Sportsbook: Operated by Caesars Southern Indiana

Sports Wagering Kiosks: 7

Sports Wagering Vendors Licensed: None

# INDIANA GRAND CASINO



**General Manager:**

Mike Rich

**Address:**

4300 N. Michigan Road  
Shelbyville, Indiana 46176

**Website:**

[www.indianagrand.com](http://www.indianagrand.com)



Date Opened: June 6, 2008

Gaming Space: 83,800 Square Feet

Electronic Gaming Devices: 2,001

Table Gaming Positions: N/A

Restaurants: 3

Hotel: N/A

Total Taxes: \$51,074,360

LDA Payments: N/A

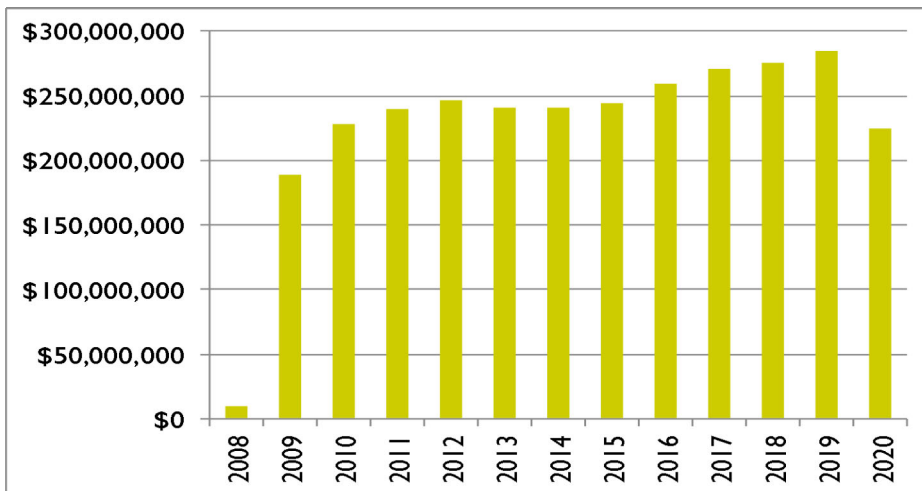
Total Employment: 967

Minority Employment: 13.10%

County Employment: 37.20%

Indiana Employment: 97.20%

## Yearly Win Totals



Sportsbook: Operated by Indiana Grand

Satellite Sports Wagering Facilities Operated: Centaur Acquisition, LLC d/b/a Winner's Circle Off Track Betting - Clarksville

Sports Wagering Kiosks: Clarksville 10 and Indiana Grand 8

Sports Wagering Vendors Licensed: None

# MAJESTIC STAR CASINO I



**General Manager:**

Jahnae Erpenbach

**Address:**

1 Buffington Harbor Dr.  
Gary, Indiana 46406

**Website:**

[www.majesticstarcasino.com](http://www.majesticstarcasino.com)



Date Opened: June 11, 1996

Gaming Space: 43,000 Square Feet

Electronic Gaming Devices: 814

Table Gaming Positions: 358

Restaurants: 6

Hotel: 300 rooms

Total Taxes: \$12,209,913

LDA Payments: \$3,025,000

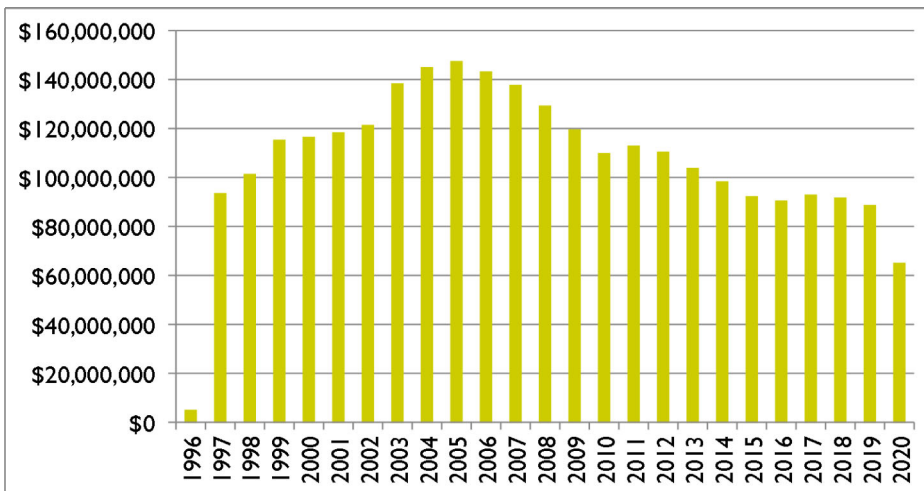
Total Employment: 745

Minority Employment: 58.00%

County Employment: 81.00%

Indiana Employment: 90.00%

## Yearly Win Totals



Sportsbook: None

Sports Wagering Kiosks: 0

Sports Wagering Vendors Licensed: None

# MAJESTIC STAR CASINO II



**General Manager:**

Jahnae Erpenbach

**Address:**

1 Buffington Harbor Dr.  
Gary, Indiana 46406

**Website:**

[www.majesticstarcasino.com](http://www.majesticstarcasino.com)



Date Opened: June 11, 1996

Gaming Space: 36,571 Square Feet

Electronic Gaming Devices: 832

Table Gaming Positions: 136

Restaurants: 6

Hotel: 300 rooms

Total Taxes: \$4,595,313

LDA Payments: \$3,025,000

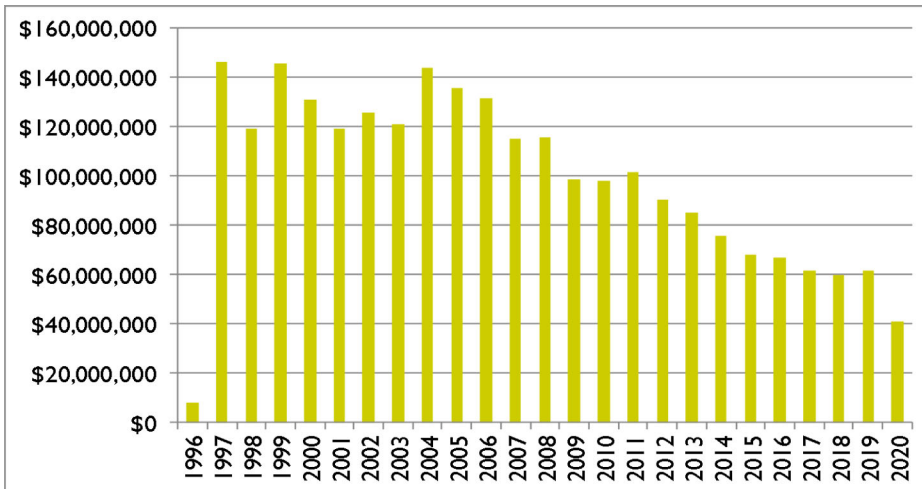
Total Employment: 161

Minority Employment: 41.00%

County Employment: 80.00%

Indiana Employment: 94.00%

## Yearly Win Totals



License relinquished pursuant to Commission Order 2019-255 and Indiana Code § 4-33-6-4.5(d) on January 1, 2020.

# Rising Star Casino



**General Manager:**

Ben Douglass

**Address:** 777 Rising Star Drive

Rising Sun, Indiana 47040

**Website:**

[www.risingstarcasino.com](http://www.risingstarcasino.com)



Date Opened: October 4, 1996

Gaming Space: 40,000 Square Feet

Electronic Gaming Devices: 825

Table Gaming Positions: 142

Restaurants: 4

Hotel: 294 rooms

Total Taxes: \$3,523,422

LDA Payments: \$640,117

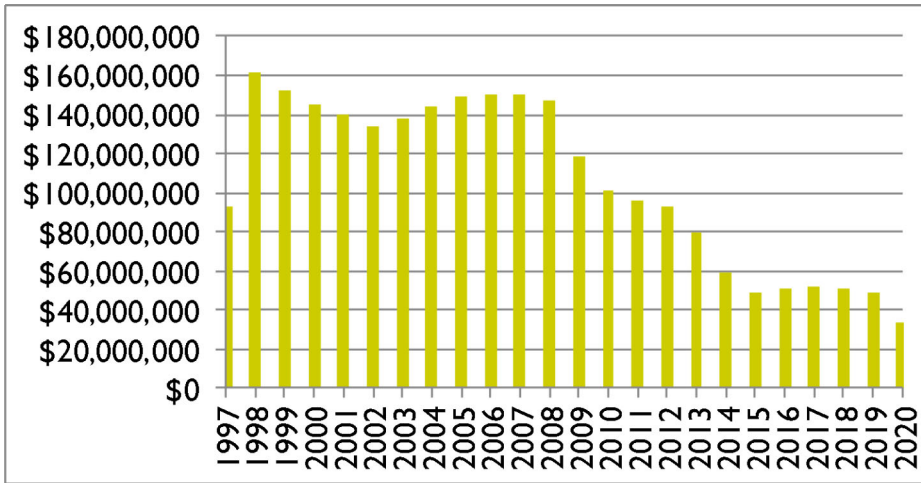
Total Employment: 452

Minority Employment: 3.53%

County Employment: 41.60%

Indiana Employment: 90.00%

## Yearly Win Totals



Sportsbook: Operated by Rising Star Casino

Sports Wagering Kiosks: 16

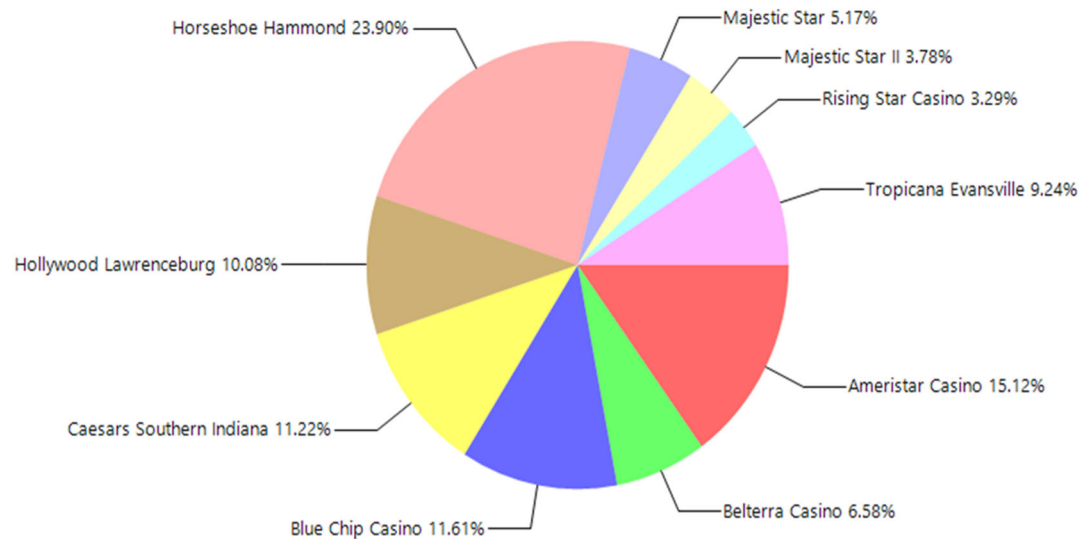
Sports Wagering Vendors Licensed: Churchill Downs Interactive Gaming, LLC d/b/a BetAmerica (Mobile)



# Appendix



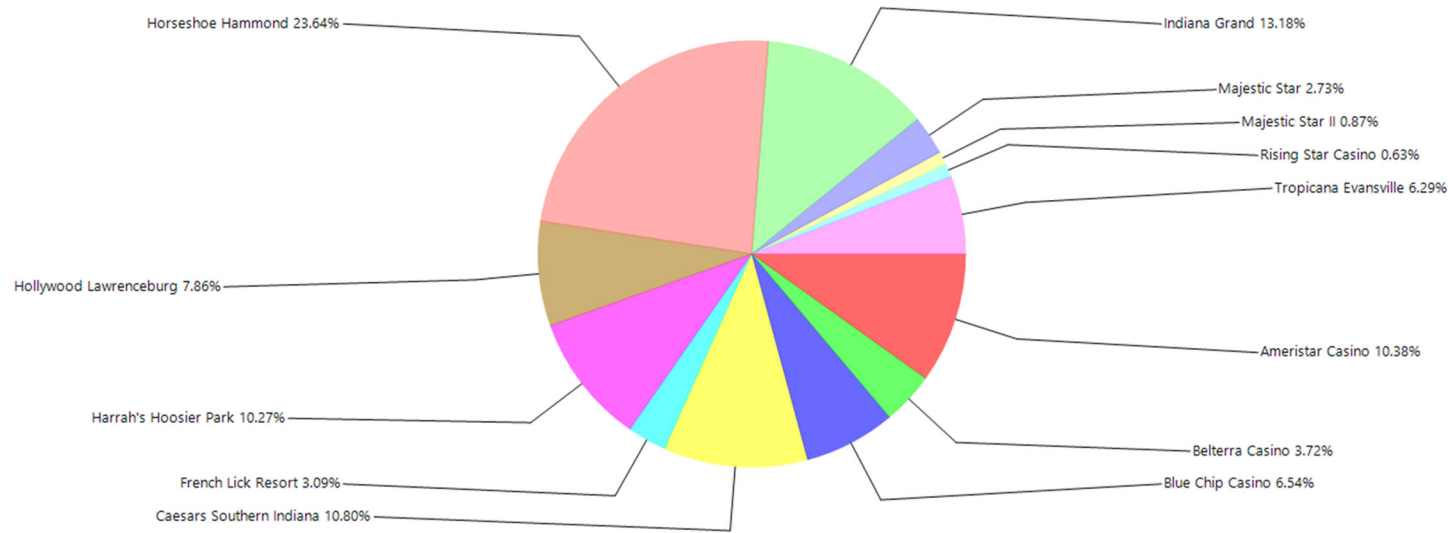
# 2020 SUPPLEMENTAL WAGERING TAX REPORTED



TAX REPORTED	HORSESHOE HAMMOND	AMERISTAR CASINO	BLUE CHIP CASINO	CAESARS SOUTHERN INDIANA	HOLLYWOOD	TROPICANA EVANSVILLE	BELTERRA CASINO	MAJESTIC STAR	MAJESTIC STAR II	RISING STAR CASINO	GRAND TOTAL
JULY	816,600	481,599	423,043	389,628	353,905	325,602	275,640	195,344	141,823	120,344	<b>3,523,527</b>
AUGUST	835,037	582,574	438,105	385,628	380,308	336,702	274,587	190,390	149,668	127,304	<b>3,700,304</b>
SEPTEMBER	847,154	496,731	412,821	357,907	316,786	306,447	210,009	180,756	158,395	126,272	<b>3,413,278</b>
OCTOBER	874,650	508,917	416,224	364,496	349,039	304,616	222,508	181,558	158,193	112,693	<b>3,492,895</b>
NOVEMBER	804,956	536,691	413,512	364,925	349,817	330,553	214,055	178,404	150,755	102,690	<b>3,446,356</b>
DECEMBER	863,499	569,644	434,877	484,456	364,025	327,561	243,330	180,737	158,372	124,535	<b>3,751,035</b>
JANUARY	892,970	571,980	407,233	472,711	376,620	336,870	220,553	174,747	152,631	108,531	<b>3,714,847</b>
FEBRUARY	952,665	588,360	438,495	457,579	384,075	385,344	250,092	185,320	117,315	119,300	<b>3,878,545</b>
MARCH	460,612	275,852	221,947	192,453	187,459	191,004	117,793	104,153	0	57,308	<b>1,808,581</b>
APRIL	0	0	0	0	0	0	0	0	0	0	<b>0</b>
MAY	0	0	0	0	0	0	0	0	0	0	<b>0</b>
JUNE	505,134	354,926	210,371	218,532	250,082	193,216	133,064	128,394	55,768	83,616	<b>2,133,101</b>
<b>TOTAL</b>	<b>7,853,276</b>	<b>4,967,274</b>	<b>3,816,627</b>	<b>3,688,315</b>	<b>3,312,117</b>	<b>3,037,915</b>	<b>2,161,630</b>	<b>1,699,805</b>	<b>1,242,919</b>	<b>1,082,593</b>	<b>32,862,471</b>

\*Per HEA 1350 (2017), effective 7/1/2018 casinos no longer report admissions. Admission tax was replaced with a supplement wagering tax.

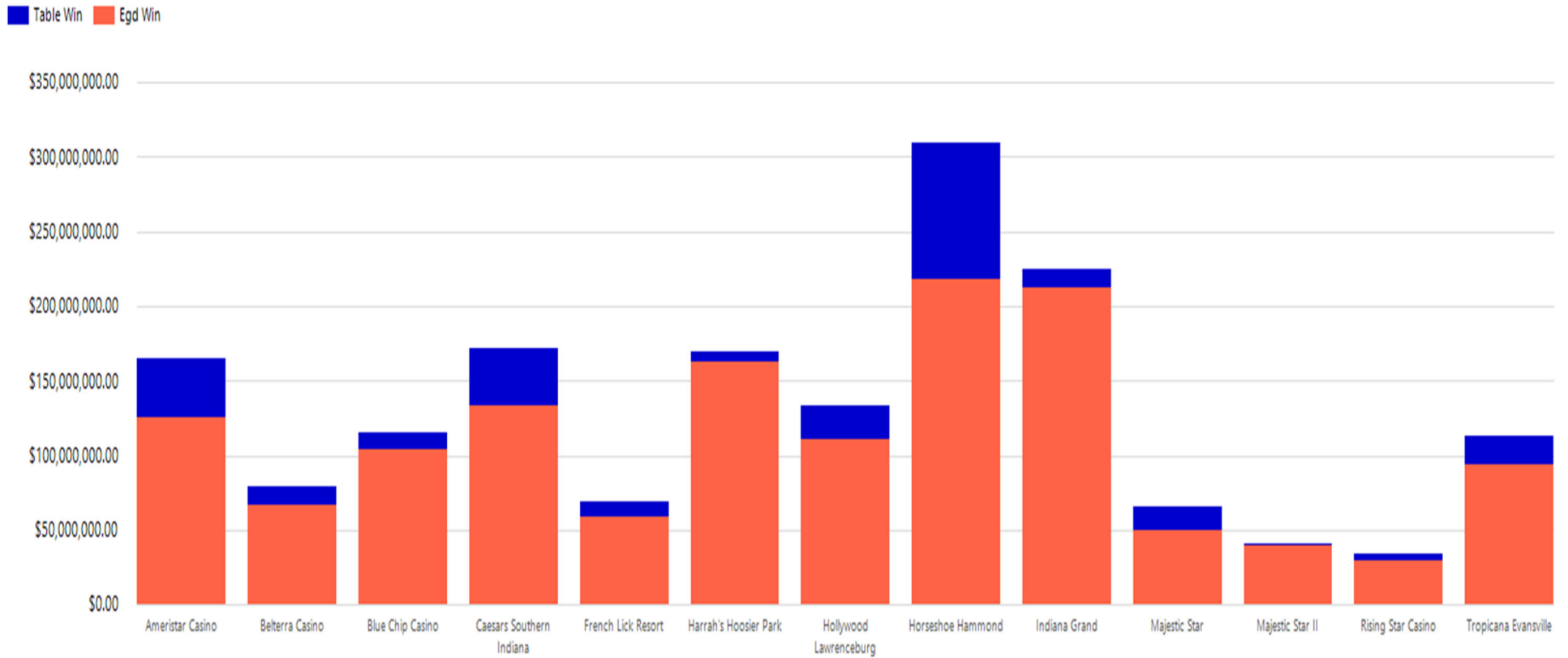
# 2020 WAGERING TAX REPORTED



TAX REPORTED	AMERISTAR CASINO	BELTERRA CASINO	BLUE CHIP CASINO	CAESARS SOUTHERN INDIANA	FRENCH LICK RESORT	HARRAH'S HOOSIER PARK	HOLLYWOOD	HORSESHOE HAMMOND	INDIANA GRAND	MAJESTIC STAR	MAJESTIC STAR II	RISING STAR CASINO	TROPICANA EVANSVILLE	GRAND TOTAL
JULY	2,286,071	1,382,808	1,813,043	2,563,344	1,121,772	4,134,794	2,018,471	5,055,789	5,420,637	983,277	202,604	171,920	1,701,750	<b>28,856,280</b>
AUGUST	3,199,201	1,377,527	1,877,591	2,987,150	1,186,114	4,158,344	2,314,903	7,136,653	4,904,274	958,339	213,812	181,864	1,759,764	<b>32,255,535</b>
SEPTEMBER	3,143,870	1,074,856	2,339,186	3,139,537	1,042,080	3,911,584	2,409,016	9,251,083	4,717,177	909,847	226,278	180,388	2,039,359	<b>34,384,262</b>
OCTOBER	3,996,030	1,488,346	2,378,421	3,981,674	1,240,990	3,904,686	2,815,961	10,131,080	4,393,958	919,000	225,990	160,990	2,122,761	<b>37,759,887</b>
NOVEMBER	4,620,198	1,431,803	2,868,216	4,335,990	1,415,329	3,936,214	3,325,254	9,890,213	4,718,426	1,197,344	215,364	146,700	2,597,789	<b>40,698,840</b>
DECEMBER	5,408,009	1,627,627	3,106,263	6,374,417	1,513,759	3,930,715	3,729,101	11,668,903	5,588,489	1,213,003	407,125	177,907	2,853,319	<b>47,598,635</b>
JANUARY	5,430,190	1,752,333	3,367,116	6,219,879	1,282,848	4,998,483	4,296,041	12,067,159	6,742,858	1,172,802	872,179	155,045	3,136,243	<b>51,493,177</b>
FEBRUARY	5,585,700	2,091,072	3,758,529	6,020,781	1,681,788	5,434,114	4,381,086	12,873,845	7,025,583	1,243,759	670,370	456,151	4,027,987	<b>55,250,764</b>
MARCH	2,618,846	984,887	1,902,402	2,641,448	772,604	2,610,165	2,138,320	6,224,489	3,566,808	835,610	0	327,477	1,996,556	<b>26,619,611</b>
APRIL	0	0	0	0	0	0	0	0	0	0	0	0	0	<b>0</b>
MAY	0	0	0	0	0	0	0	0	0	0	0	0	0	<b>0</b>
JUNE	3,729,159	1,112,572	1,803,177	3,354,651	656,310	2,553,014	2,852,647	6,826,134	3,736,694	1,077,129	318,673	477,806	2,019,684	<b>30,517,649</b>
<b>TOTAL</b>	<b>40,017,275</b>	<b>14,323,831</b>	<b>25,213,944</b>	<b>41,618,870</b>	<b>11,913,594</b>	<b>39,572,112</b>	<b>30,280,800</b>	<b>91,125,348</b>	<b>50,814,904</b>	<b>10,510,108</b>	<b>3,352,394</b>	<b>2,436,247</b>	<b>24,255,213</b>	<b>385,434,640</b>



# 2020 TOTAL WIN PER CASINO



	Ameristar Casino	Beltterra Casino	Blue Chip Casino	Caesars Southern Indiana	French Lick Resort	Harrah's Hoosier Park	Hollywood	Horseshoe Hammond	Indiana Grand	Majestic Star	Majestic Star II	Rising Star Casino	Tropicana Evansville
<b>TABLE GAME WIN</b>	\$38,805,378	\$12,746,948	\$12,336,010	\$38,039,634	\$9,201,137	\$6,611,178	\$21,740,514	\$90,958,363	\$12,904,158	\$15,867,635	\$774,375	\$3,696,646	\$18,849,218
<b>EGD WIN</b>	\$125,627,666	\$66,553,870	\$103,513,542	\$133,687,085	\$59,317,570	\$162,483,191	\$111,232,183	\$218,358,282	\$212,074,749	\$49,389,795	\$40,398,114	\$30,070,801	\$93,933,511
<b>TOTAL WIN</b>	\$164,433,044	\$79,300,818	\$115,849,552	\$171,726,720	\$68,518,707	\$169,094,369	\$132,972,697	\$309,316,645	\$224,978,907	\$65,257,430	\$41,172,489	\$33,767,447	\$112,782,729

STATE-WIDE WIN - TABLE GAMES	\$282,531,193
STATE-WIDE WIN - EGD	\$1,406,640,361
<b>TOTAL STATE-WIDE WIN</b>	<b>\$1,689,171,554</b>

## 2020 GAMING OPERATIONS SUMMARY

EGD'S	UNITS*	COIN IN	WIN
<b>TOTAL</b>	<b>9,246</b>	<b>\$14,539,482,585</b>	<b>\$1,406,640,361</b>

\* As of June 30, 2020, and as such, reflects compliance with physical distancing requirements contained in the COVID-19 health and safety protocols.

TABLE GAMES	UNITS*	DROP	WIN
Baccarat	88	348,392,228	61,691,721
Big Six	2	902,997	379,154
Blackjack/21	305	480,668,059	99,586,724
Craps	47	179,491,710	39,036,792
Non Traditional	1	669	(261)
Poker ***	96	155,070,417	42,570,097
Poker Room **	0	12,629,479	12,629,515
Roulette	53	109,001,972	26,637,452
<b>TOTAL</b>	<b>592</b>	<b>\$1,286,157,530</b>	<b>\$282,531,193</b>

\* As of June 30, 2020

\*\* Traditional Poker

\*\*\* Includes Caribbean Stud, Let It Ride, Pai Gow, 3 Card, Boston 5 Stud, 3-5-7, Wild Hold Em Fold Em, Crazy 4, and 2-2-1.

Totals may include minor variations due to rounding.

# 2020 SUMMARY OF TABLE GAME ACTIVITY

As reported for the year ended June 30, 2020. Totals may include minor variations due to rounding.

UNITS*	Ameristar Casino	Belterra Casino	Blue Chip Casino	Caesars Southern Indiana	French Lick Resort	Harrah's Hoosier Park	Hollywood	Horseshoe Hammond	Indiana Grand	Majestic Star	Majestic Star II	Rising Star Casino	Tropicana Evansville
<b>Baccarat</b>	24	1	2	5	1	2	4	31	4	12	n/a	n/a	2
<b>Big Six</b>	n/a	n/a	n/a	n/a	n/a	n/a	n/a	2	n/a	n/a	n/a	n/a	n/a
<b>Blackjack</b>	29	20	23	42	23	16	39	39	36	17	n/a	15	6
<b>Craps</b>	4	4	4	5	3	2	5	9	5	2	n/a	2	2
<b>Non Traditional</b>	n/a	n/a	n/a	n/a	n/a	n/a	n/a	1	n/a	n/a	n/a	n/a	n/a
<b>Poker***</b>	13	9	7	14	5	4	7	14	10	1	n/a	6	6
<b>Poker Room**</b>	n/a	0	0	0	n/a	n/a	0	0	n/a	n/a	0	n/a	0
<b>Roulette</b>	7	3	4	5	3	4	5	10	6	2	n/a	1	3
<b>TOTAL</b>	<b>77</b>	<b>37</b>	<b>40</b>	<b>71</b>	<b>35</b>	<b>28</b>	<b>60</b>	<b>106</b>	<b>61</b>	<b>34</b>	<b>0</b>	<b>24</b>	<b>19</b>
<b>DROP</b>													
<b>Baccarat</b>	\$110,229,595	\$655,447	\$4,082,490	\$22,057,205	\$397,335	\$2,232,569	\$4,624,026	\$160,325,163	\$6,543,546	\$31,075,514	0	0	\$6,169,338
<b>Big Six</b>	0	0	0	0	0	0	0	\$902,997	0	0	0	0	0
<b>Blackjack</b>	\$68,001,566	\$26,612,142	\$26,687,171	\$78,340,261	\$23,333,569	\$13,250,077	\$55,253,387	\$96,623,112	\$21,621,273	\$25,969,893	0	\$10,412,556	\$34,563,052
<b>Craps</b>	\$21,026,915	\$12,770,983	\$11,079,012	\$25,649,099	\$8,713,708	\$4,179,418	\$16,237,745	\$44,458,227	\$8,351,687	\$8,438,774	0	\$6,102,550	\$12,483,592
<b>Non Traditional</b>	0	0	0	0	0	0	0	\$669	0	0	0	0	0
<b>Poker***</b>	\$14,000,828	\$9,147,646	\$11,537,507	\$28,376,498	\$8,902,908	\$2,705,999	\$10,482,381	\$45,583,923	\$5,881,477	\$1,905,117	0	\$4,169,419	\$12,376,714
<b>Poker Room**</b>	0	\$90,162	\$443,397	\$2,582,754	0	0	\$594,987	\$6,836,279	0	0	\$774,375	0	\$1,307,525
<b>Roulette</b>	\$17,996,546	\$3,885,533	\$5,939,391	\$14,398,469	\$3,529,260	\$2,789,780	\$8,057,947	\$33,718,075	\$5,879,432	\$3,526,666	0	\$1,113,477	\$8,167,396
<b>TOTAL</b>	<b>\$231,255,449</b>	<b>\$53,161,913</b>	<b>\$59,768,968</b>	<b>\$171,404,286</b>	<b>\$44,876,780</b>	<b>\$25,157,843</b>	<b>\$95,250,472</b>	<b>\$388,448,446</b>	<b>\$48,277,414</b>	<b>\$70,915,965</b>	<b>\$774,375</b>	<b>\$21,798,002</b>	<b>\$75,067,617</b>
<b>WIN</b>													
<b>Baccarat</b>	\$15,876,241	\$70,890	\$712,738	\$3,551,756	(\$86,154)	\$404,168	\$1,290,256	\$31,186,301	\$1,082,988	\$6,218,287	0	0	\$1,384,251
<b>Big Six</b>	0	0	0	0	0	0	0	\$379,154	0	0	0	0	0
<b>Blackjack</b>	\$11,143,308	\$5,132,123	\$4,751,295	\$15,107,976	\$4,459,355	\$3,652,550	\$11,279,486	\$22,864,426	\$6,892,908	\$5,943,467	0	\$1,198,336	\$7,161,496
<b>Craps</b>	\$4,645,961	\$3,412,893	\$1,948,659	\$5,641,736	\$1,484,784	\$866,777	\$3,616,615	\$9,009,378	\$1,716,529	\$2,390,564	0	\$1,327,313	\$2,975,583
<b>Non Traditional</b>	0	0	0	0	0	0	0	(\$261)	0	0	0	0	0
<b>Poker***</b>	\$3,430,262	\$3,021,752	\$3,091,161	\$7,424,361	\$2,415,055	\$935,777	\$2,824,117	\$12,113,463	\$1,917,918	\$562,550	0	\$944,505	\$3,889,177
<b>Poker Room**</b>	0	\$90,198	\$443,397	\$2,582,754	0	0	\$594,987	\$6,836,279	0	0	\$774,375	0	\$1,307,525
<b>Roulette</b>	\$3,709,606	\$1,019,092	\$1,388,760	\$3,731,051	\$928,097	\$751,907	\$2,135,053	\$8,569,624	\$1,293,817	\$752,767	0	\$226,492	\$2,131,188
<b>TOTAL</b>	<b>\$38,805,378</b>	<b>\$12,746,948</b>	<b>\$12,336,010</b>	<b>\$38,039,634</b>	<b>\$9,201,137</b>	<b>\$6,611,178</b>	<b>\$21,740,514</b>	<b>\$90,958,363</b>	<b>\$12,904,158</b>	<b>\$15,867,635</b>	<b>\$774,375</b>	<b>\$3,696,646</b>	<b>\$18,849,218</b>

\*Reflects compliance with physical distancing requirements contained in the COVID-19 health and safety protocols.

\*\* Traditional Poker

\*\*\* Includes Caribbean Stud/Draw, Let It Ride, Pai Gow, 3 Card, Boston 5 Stud, 3-5-7, Wild Hold em Fold Em, Crazy 4, and 2-2-1

## 2020 SUMMARY OF EGD ACTIVITY

UNITS	Ameristar Casino	Belterra Casino	Blue Chip Casino	Caesars Southern Indiana	French Lick Resort	Harrah's Hoosier Park	Hollywood Lawrenceburg	Horseshoe Hammond	Indiana Grand	Majestic Star	Majestic Star II	Rising Star Casino	Tropicana Evansville
<b>TOTAL</b>	1,000	590	764	641	409	702	1,129	1,062	936	425	571	331	686

COIN IN	Ameristar Casino	Belterra Casino	Blue Chip Casino	Caesars Southern Indiana	French Lick Resort	Harrah's Hoosier Park	Hollywood Lawrenceburg	Horseshoe Hammond	Indiana Grand	Majestic Star	Majestic Star II	Rising Star Casino	Tropicana Evansville
<b>TOTAL</b>	\$1,261,929,832	\$702,352,278	\$1,149,252,307	\$1,334,396,732	\$682,152,145	\$1,712,940,502	\$1,137,834,016	\$2,194,514,902	\$2,197,938,684	\$499,070,238	\$396,244,719	\$350,829,820	\$920,026,408

WIN	Ameristar Casino	Belterra Casino	Blue Chip Casino	Caesars Southern Indiana	French Lick Resort	Harrah's Hoosier Park	Hollywood Lawrenceburg	Horseshoe Hammond	Indiana Grand	Majestic Star	Majestic Star II	Rising Star Casino	Tropicana Evansville
<b>TOTAL</b>	\$125,627,666	\$66,553,870	\$103,513,542	\$133,687,085	\$59,317,570	\$162,483,191	\$111,232,183	\$218,358,282	\$212,074,749	\$49,389,795	\$40,398,114	\$30,070,801	\$93,933,516

\* As of June 30, 2020, and as such, reflects compliance with physical distancing requirements contained in the COVID-19 health and safety protocols.

# 2020 GRADUATED TAX STATUS

North Casinos	Rate	Date Of Change
Ameristar Casino	15%	07/01/2019
	20%	08/18/2019
	25%	10/02/2019
	30%	11/18/2019
	35%	06/20/2020
	40%	
Blue Chip Casino	15%	07/01/2019
	20%	09/01/2019
	25%	11/04/2019
	30%	01/06/2020
	35%	
	40%	
Horseshoe Hammond	15%	07/01/2019
	20%	07/25/2019
	25%	08/18/2019
	30%	09/11/2019
	35%	11/22/2019
	40%	
Majestic Star	15%	07/01/2019
	20%	10/31/2019
	25%	03/04/2020
	30%	
	35%	
	40%	
Majestic Star II	5%	07/01/2019
	20%	12/25/2019
	25%	
	30%	
	35%	
	40%	

Racinos	Rate	Date of Change
Hoosier Park	25%	07/01/2019
	30%	01/06/2020
	35%	
Indiana Grand	25%	07/01/2019
	30%	12/07/2019
	35%	

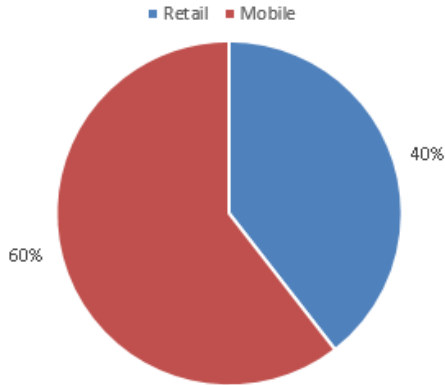
Casinos	
AGR	Rate
less than \$25 million	15%
\$25 - \$50 million	20%
\$50 - \$75 million	25%
\$75 - \$150 million	30%
\$150 - \$600 million	35%
over \$600 million	40%

Racinos	
AGR	Rate
less than \$100 million	25%
\$100-\$200 million	30%
over \$200 million	35%

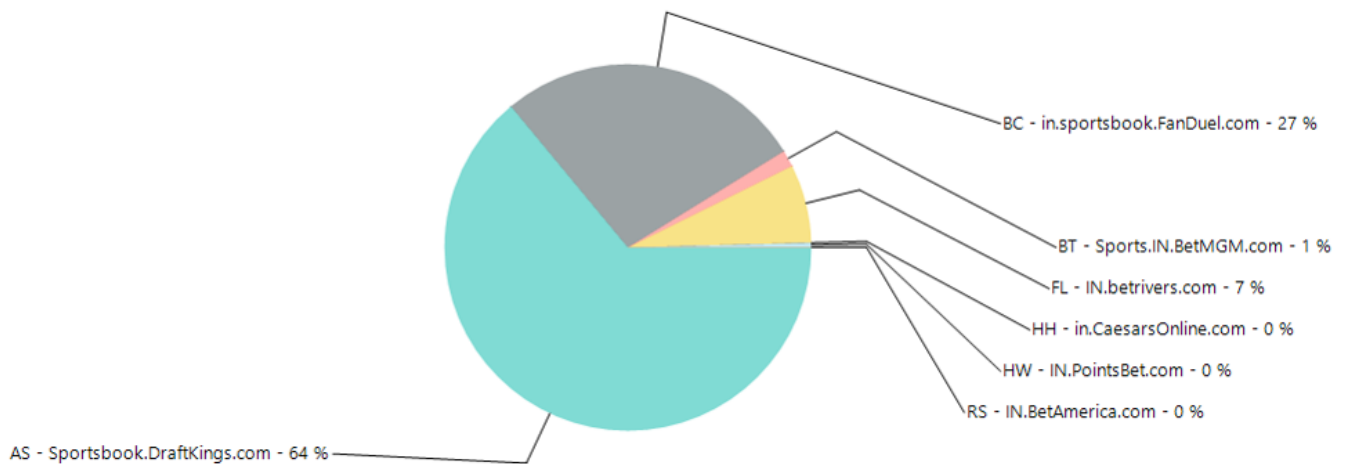
South Casinos	Rate	Date Of Change
Belterra Casino	15%	07/01/2019
	20%	09/28/2019
	25%	01/10/2020
	30%	
	35%	
	40%	
Caesars Southern Indiana	15%	07/01/2019
	20%	08/16/2019
	25%	10/01/2019
	30%	11/19/2019
	35%	03/11/2020
	40%	
French Lick Resort	15%	07/01/2019
	20%	10/13/2019
	25%	01/31/2020
	30%	
	35%	
	40%	
Hollywood Lawrenceburg	15%	07/01/2019
	20%	08/26/2019
	25%	10/25/2019
	30%	12/23/2019
	35%	
	40%	
Rising Star Casino	5%	07/01/2019
	20%	02/15/2020
	25%	
	30%	
	35%	
	40%	
Tropicana Evansville	15%	07/01/2019
	20%	09/06/2019
	25%	11/15/2019
	30%	01/22/2020
	35%	
	40%	

# 2020 SPORTS WAGERING RECEIPTS

	TOTAL
<b>Retail</b>	<b>\$30,375,048</b>
<b>Mobile Vendor</b>	<b>\$46,516,489</b>

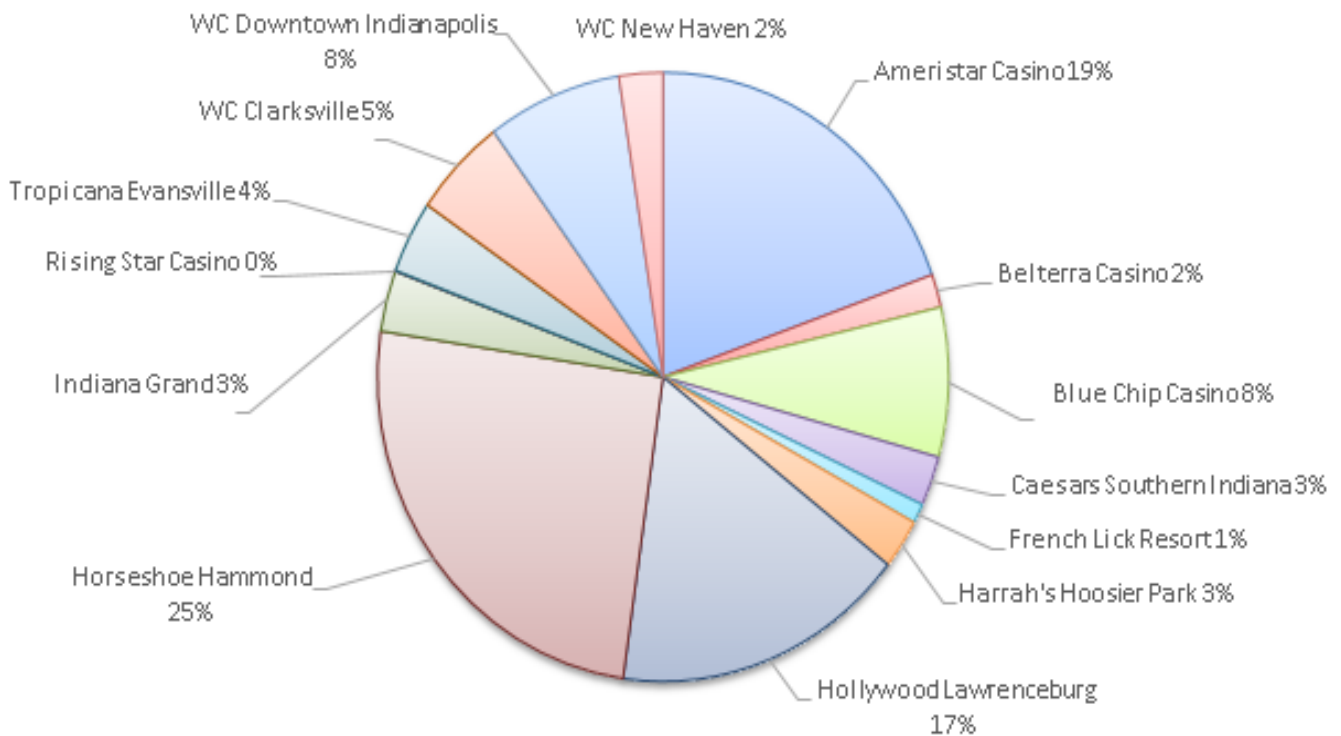


MOBILE SPORTS WAGERING GROSS RECEIPTS	
AS - Sportsbook.DraftKings.com	29,835,825
BC - in.sportsbook.FanDuel.com	12,572,451
BT - Sports.IN.BetMGM.com	687,488
FL - IN.betrivers.com	3,227,093
HW - IN.PointsBet.com	168,752
HH - in.CaesarsOnline.com	6,413
RS - IN.BetAmerica.com	18,468



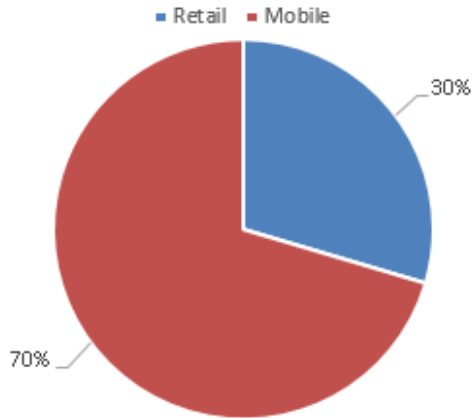
# 2020 SPORTS WAGERING RECEIPTS

RETAIL SPORTS WAGERING GROSS RECEIPTS	
Ameristar Casino	5,940,495
Belterra Casino	533,606
Blue Chip Casino	2,410,550
Caesars Southern Indiana	801,910
French Lick Resort	314,480
Harrah's Hoosier Park	804,357
Hollywood Lawrenceburg	5,062,473
Horseshoe Hammond	7,645,103
Indiana Grand	982,066
Rising Star Casino	13,533
Tropicana Evansville	1,173,062
WC Clarksville	1,626,528
WC Downtown Indianapolis	2,314,223
WC New Haven	752,661

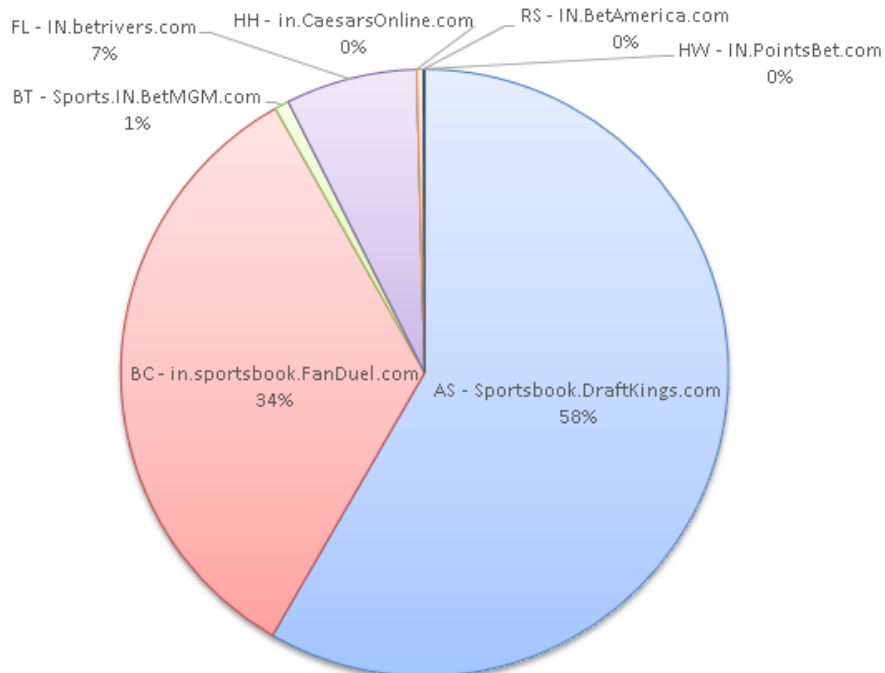


# 2020 SPORTS WAGERING HANDLE

	TOTAL
<b>Retail</b>	\$284,580,795
<b>Mobile Vendor</b>	\$677,658,778



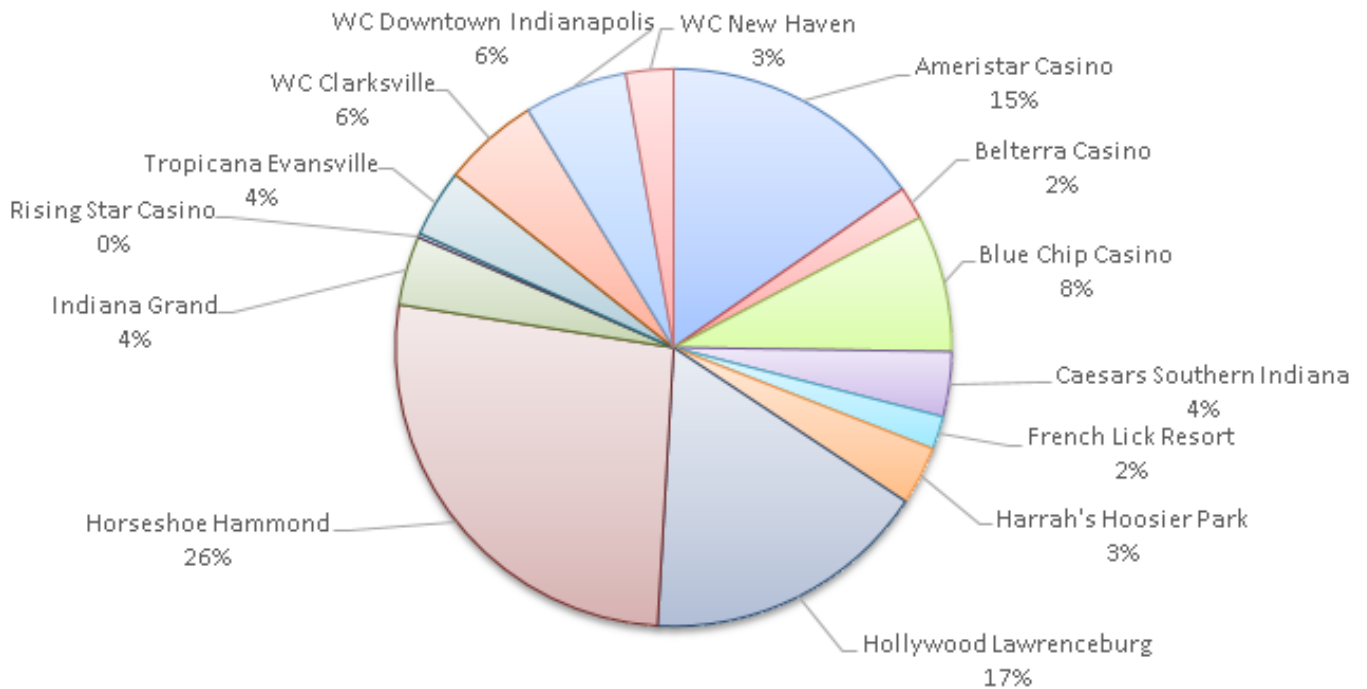
MOBILE SPORTS WAGERING HANDLE	
AS - Sportsbook.DraftKings.com	395,373,304
BC - in.sportsbook.FanDuel.com	226,861,104
BT - Sports.IN.BetMGM.com	5,172,138
FL - IN.betrivers.com	47,401,074
HH - in.CaesarsOnline.com	41,507
HW - IN.PointsBet.com	2,302,889
RS - IN.BetAmerica.com	506,763



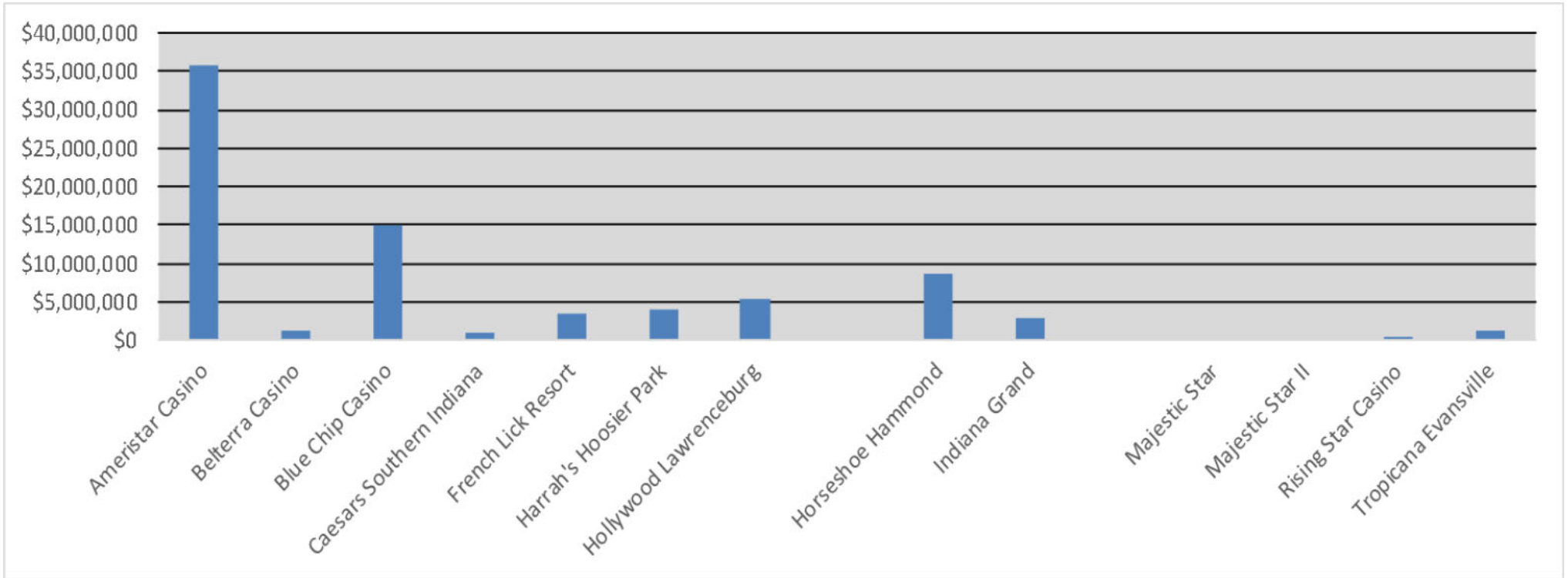


# 2020 SPORTS WAGERING HANDLE

SPORTS WAGERING HANDLE PER RETAIL LOCATION	
Ameristar Casino	43,760,040
Belterra Casino	5,449,233
Blue Chip Casino	22,598,798
Caesars Southern Indiana	10,699,968
French Lick Resort	5,467,911
Harrah's Hoosier Park	9,659,451
Hollywood Lawrenceburg	47,284,931
Horseshoe Hammond	75,564,921
Indiana Grand	11,400,369
Rising Star Casino	653,590
Tropicana Evansville	11,198,619
WC Clarksville	15,909,753
WC Downtown Indianapolis	17,067,224
WC New Haven	7,865,987



# 2020 SPORTS WAGERING WIN BY CASINO



	Ameristar Casino	Beltterra Casino	Blue Chip Casino	Caesars Southern Indiana	French Lick Resort	Harrah's Hoosier Park	Hollywood	Horseshoe Hammond	Indiana Grand	Majestic Star	Majestic Star II	Rising Star Casino	Tropicana Evansville
<b>TOTAL</b>	\$35,726,120	\$1,236,740	\$15,075,905	\$1,015,034	\$3,551,783	\$3,982,120	\$5,321,447	\$8,502,672	\$2,731,121	\$0	\$0	\$48,237	\$1,306,154



The Indiana Gaming Commission would like to thank  
Josie Conrad for her help in creating this report.

[WWW.IN.GOV/IGC](http://WWW.IN.GOV/IGC)

**101 West Washington Street, Suite 1600  
Indianapolis, Indiana 46204  
317.233.0046**

